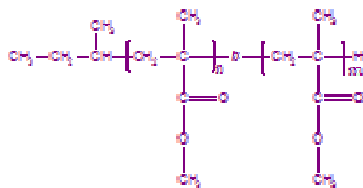


Sample Name: Poly (methyl methacrylate isotactic-b-methyl methacrylate syndiotactic)

Sample #: P19410-MMA(iso)MMA(syndio)

Structure:



Composition:

Mn × 10 ³ MMA-b-MMA	PDI
77.0-b-12.0	1.25
T _g	50.0 °C

Synthesis Procedure:

By anionic polymerization process.

Characterization:

BY SEC and HNMR analysis.

Thermal analysis:

Thermal analysis of the samples was carried out on a TA Q100 differential scanning calorimeter at a heating rate of 10°C/min. The midpoint of the slope change of the heat flow plot of the second heating scan was considered as the glass transition temperature (T_g).

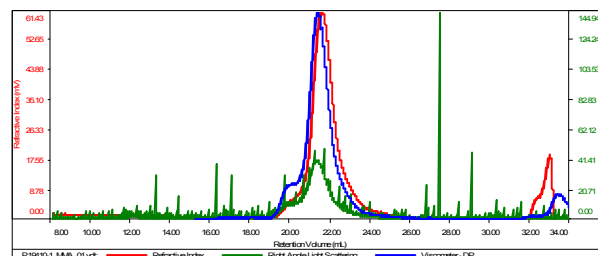
Solubility:

Polymer is soluble in THF and CHCl_3 .

SEC of the block copolymer:

Sample ID:P19410-MMA
first block

Concentration (mg/mL)	0.9519
Sample dn/dc (mL/g)	0.0940
Method File	PS80K-June30-2015-0000.vom
Column Set	3x PL 1113-6300
Solvent	THF



Sample	MW Number Average (Da)	MW Weight Average (Da)	MW at Peak (Da)	Polydispersity	Intrinsic Viscosity (dL/g)
P19410-1_MMA_01.vcl	88,645	103,754	91,939	1.157	1.6619

¹H-NMR Spectrum For the first block

