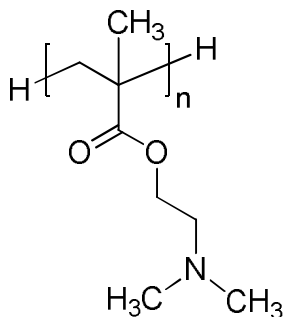


Sample Name:

Poly (N,N-dimethylaminoethyl methacrylate)

Sample #: **P19411-DMAEMA**

Structure:



Composition:

$M_n \times 10^3$ (g/mol)	M_w/M_n
518.0	1.6

Synthesis Procedure:

Poly(N,N-dimethyl aminoethyl methacrylate) was obtained by anionic or free radical polymerization technique.

Characterization:

The molecular weight and polydispersity index (M_w/M_n) were obtained by size exclusion chromatography (SEC).

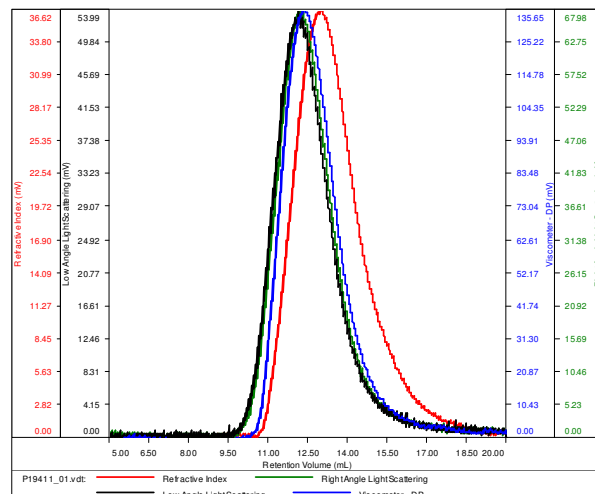
Solubility:

Poly(N,N-dimethylaminoethyl methacrylate) is soluble in THF, chloroform, toluene, and dioxane. The polymer precipitates from hexanes, methanol, and ethanol.

SEC elugram:

SAMPLE ID: P19411-DMNEMA

Conc (mg/mL)	4.5859
dn/dc (mL/g)	0.0650
Method	ps80k-July292015-0000.vcm
Solvent	DMF w 0.03M LiBr
Column	PSS



Sample	Mn	Mw	Mp	Mw/Mn	IV
P19411_01.vdt	517,497	822,394	669,425	1.589	0.8045