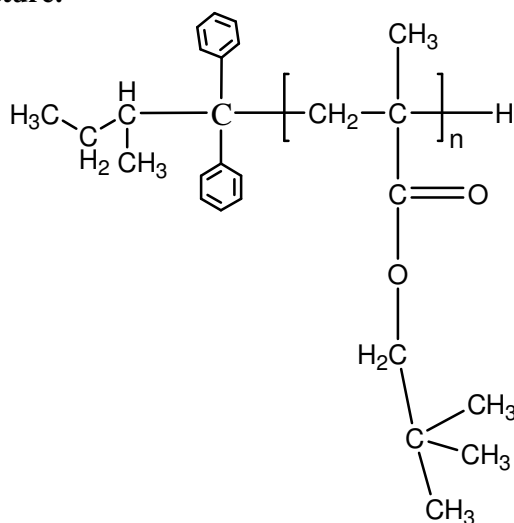


Sample Name: Poly(neopentyl methacrylate)

Sample #: P19475-NPMA

Structure:



Composition:

$M_n \times 10^3$ (g/mol)	M_w/M_n
464.0	1.8

Synthesis procedure:

The polymer was synthesized by anionic Process

Characterization:

The molecular weight and polydispersity index (M_w/M_n) of poly(neopentyl methacrylate) were obtained by size exclusion chromatography (SEC).

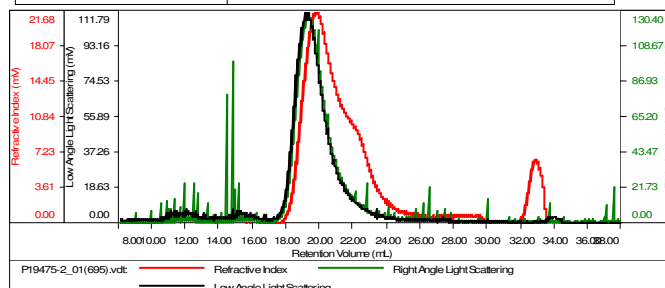
Solubility:

Poly(neopentyl methacrylate) is soluble in THF, chloroform, toluene, and dioxane. The polymer precipitates from hexanes, methanol, and ethanol.

SEC elugram of the homopolymer:

Sample ID-P19475-NPMA

Concentration (mg/mL)	0.4805
Sample dn/dc (mL/g)	0.0940
Method File	PS80K-March2016-0001.vcm
Column Set	3x PL 1113-6300
Solvent	THF



Sample	Mh (Da)	Mw (Da)	Mw/Mh	IV (dL/g)	Rh (nm)	Ret Vol (mL)
P19475-2_01(695).vc	463,245	851,044	1.837	12.6659	67.98	19.780