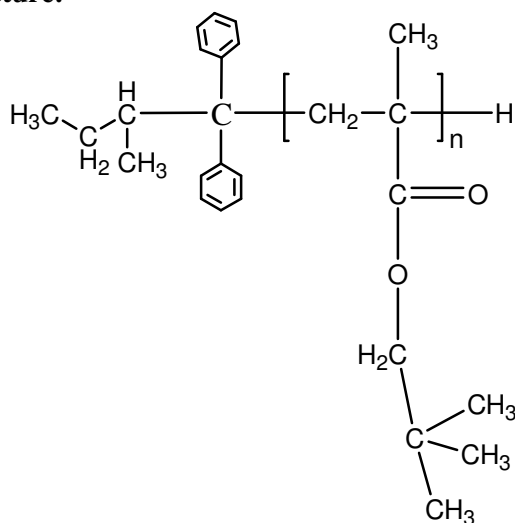


Sample Name: Poly(neopentyl methacrylate)

Sample #: P19477-NPMA

Structure:



Composition:

$M_n \times 10^3$ (g/mol)	M_w/M_n
289.0	1.75

Synthesis procedure:

The polymer was synthesized by anionic Process

Characterization:

The molecular weight and polydispersity index (M_w/M_n) of poly(neopentyl methacrylate) were obtained by size exclusion chromatography (SEC).

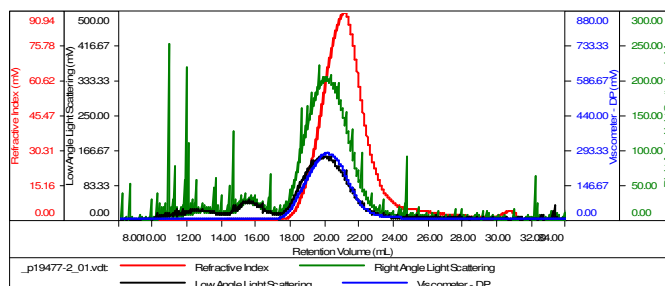
Solubility:

Poly (neopentyl methacrylate) is soluble in THF, chloroform, toluene, and dioxane. The polymer precipitates from hexanes, methanol, and ethanol.

SEC elugram of the homopolymer:

Sample ID: P19477-NPMA

Concentration (mg/mL)	1.8269
Sample dn/dc (mL/g)	0.0940
Method File	PS80K-March2016-0001.vcm
Column Set	3x PL 1113-6300
Solvent	THF



Sample	Mh (Da)	Mw (Da)	Mw/Mh	IV (dL/g)	Rh (nm)	Ret Vol (mL)
_p19477-2_01.vcl	269,540	476,282	1.767	8.9055	49.35	21.090