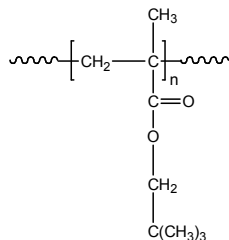


Sample Name: Poly(neopentyl methacrylate)

Sample #: P19480-NPMA

SEC elugram:

Structure:

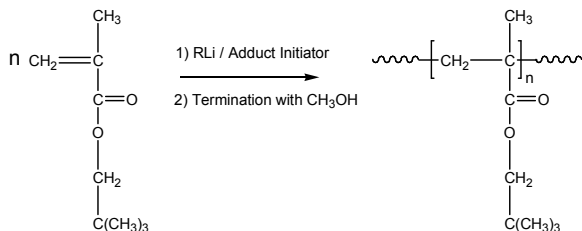


Composition:

Mn x 10 ³	Mw/Mn
17.5	1.45

Synthesis Procedure:

Poly(neopentyl methacrylate) was obtained by living anionic polymerization of neopentyl methacrylate. The reaction scheme used for the polymer synthesis is shown below:



Characterization:

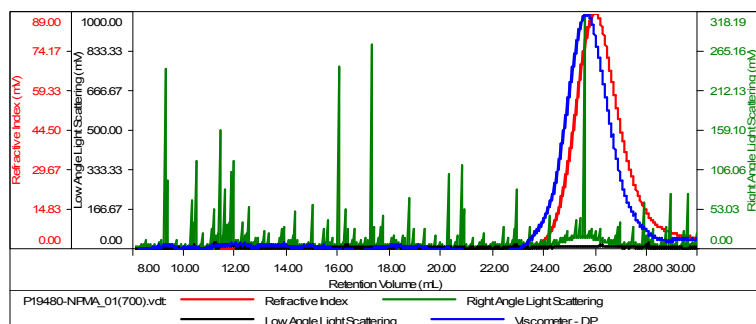
The molecular weight and polydispersity index (Mw/Mn) of poly(neopentyl methacrylate) were obtained by size exclusion chromatography (SEC).

Solubility:

Poly(neopentyl methacrylate) is soluble in THF, CHCl₃, toluene and dioxane. The polymer precipitates from hexanes, methanol and ethanol.

Sample ID: P19480-NPMA

Concentration (mg/mL)	2.0992
Sample dn/dc (mL/g)	0.0940
Method File	PS80K-June30-2015-0000.vcm
Column Set	3x PL 1113-6300
Solvent	THF



Sample	MW Number Average (Da)	MW Weight Average (Da)	MW at Peak (Da)	Polydispersity	Intrinsic Viscosity (dL/g)
P19480-NPMA_01(700).vdt	17,738	25,651	20,155	1.446	0.6614