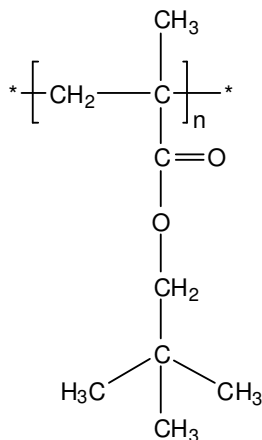


Sample Name: Poly(neopentyl methacrylate)

Sample #: P19490A-NPMA

Structure:



Composition:

$M_n \times 10^3$ (g/mol)	M_w/M_n
7.5	2.0

Synthesis procedure:

Poly(neopentyl methacrylate) was obtained by living anionic polymerization of neopentyl methacrylate.

Characterization:

The molecular weight and polydispersity index (M_w/M_n) of poly(neopentyl methacrylate) were obtained by size exclusion chromatography (SEC).

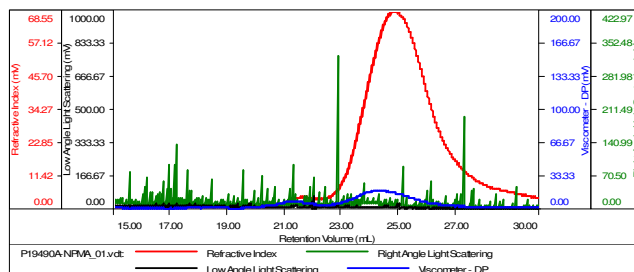
Solubility:

Poly(neopentyl methacrylate) is soluble in THF, chloroform, toluene, and dioxane. The polymer precipitates from hexanes, methanol, and ethanol.

SEC elugram of the homopolymer:

Sample ID:P19490A-NPMA

Concentration (mg/mL)	1.0035
Sample dn/dc (mL/g)	0.1850
Method File	P590KJune30-2015-0000.vcm
Column Set	3x PL 1113-6300
Solvent	THF



Sample	MW Number Average (Da)	MW Weight Average (Da)	MW at Peak (Da)	Polydispersity	Intrinsic Viscosity (dL/g)
P19490A-NPMA_01.vct	7,305	15,316	6,096	2.096	0.9635