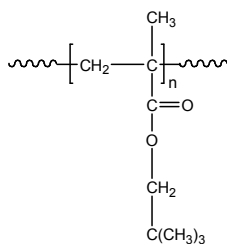


Sample Name: Poly(neopentyl methacrylate)

Sample #: P19503-NPMA

Structure:



Composition:

Mn x 10 ³	PDI
140.0	1.7

Synthesis Procedure:

Poly(neopentyl methacrylate) is obtained by living anionic polymerization of neopentyl methacrylate.

Characterization:

The molecular weight and polydispersity index (PDI) of Poly(neopentyl methacrylate) are obtained by size exclusion chromatography.

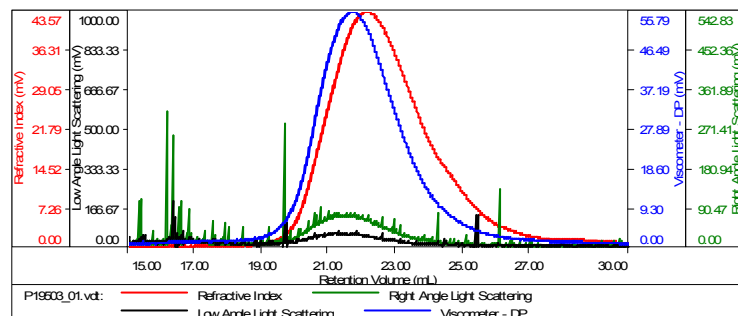
Solubility:

Poly(neopentyl methacrylate) is soluble in THF, CHCl₃, toluene and dioxane. The polymer precipitates from hexanes, methanol and ethanol.

SEC of Homopolymer:

Sample ID:P19503-NPMA

Concentration (mg/mL)	1.6058
Sample dry/dc (mL/g)	0.0840
Method File	PS80K-June30-2015-0000.vcm
Column Set	3x PL 1113-6300
Solvent	THF



Sample	MW Number Average (Da)	MW Weight Average (Da)	MW at Peak (Da)	Polydispersity	Intrinsic Viscosity (dL/g)
P19503_01.vdt	140,251	238,256	227,489	1.699	2.9697