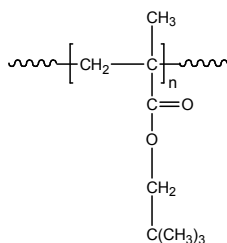


Sample Name: **Poly(neopentyl methacrylate)**

Sample #: **P19503A-NPMA**

Structure:



Composition:

Mn x 10 <sup>3</sup>	PDI
75.0	3.5

Synthesis Procedure:

Poly(neopentyl methacrylate) is obtained by living anionic polymerization of neopentyl methacrylate.

Characterization:

The molecular weight and polydispersity index (PDI) of Poly(neopentyl methacrylate) are obtained by size exclusion chromatography.

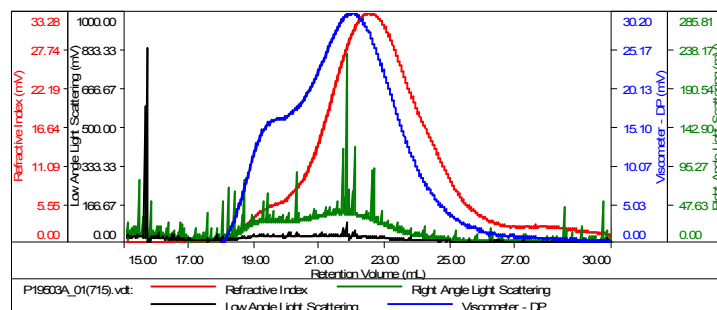
Solubility:

Poly(neopentyl methacrylate) is soluble in THF, CHCl<sub>3</sub>, toluene and dioxane. The polymer precipitates from hexanes, methanol and ethanol.

SEC of Homopolymer:

Sample ID: **P19503A-NPMA**

Concentration (mg/mL)	1.3195
Sample dn/dc (mL/g)	0.0850
Method File	PS80K-June30-2015-0000.vcm
Column Set	3x PL 1113-6300
Solvent	THF



Sample	MW Number Average (Da)	MW Weight Average (Da)	MW at Peak (Da)	Polydispersity	Intrinsic Viscosity (dL/g)
P19503A_01(715).vdt	74,625	264,011	126,336	3.538	2.6528