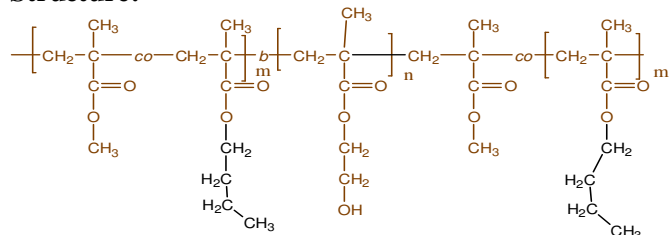


Sample Name: Poly(Methyl methacrylate-co-n-Butyl methacrylate random-b-2-Hydroxy ethyl methacrylate-b-Methyl methacrylate-co-n-Butyl methacrylate random)

Sample #: P19542-MMA_nBuMA_ran-b-HEMA-b-MMA_nBuMA_ran

Structure:



Composition:

Mn × 10 ³	
MMA _n BuMA _r an-b-HEMATMS-b-MMA _n BuMA _r an	PDI
25.0-b-40.0-b-3.0	1.16
MMA _n BuMA _r an-b-HEMA-b-MMA _n BuMA _r an	
25.0-b-25.0-b-3.0	

MMA:nBuMA mole ratio :	52:48
MMA:nBuMA wt ratio	58:42

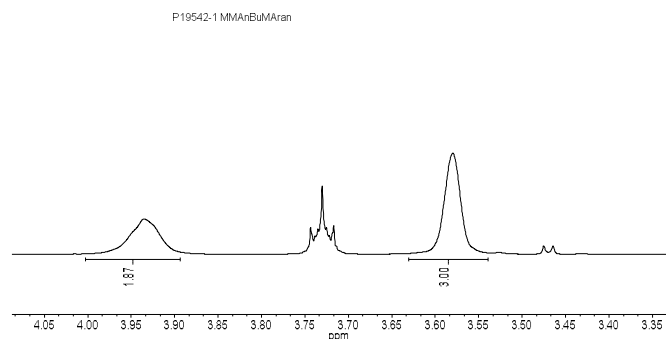
Synthesis Procedure:

By anionic process by sequential addition of monomers.

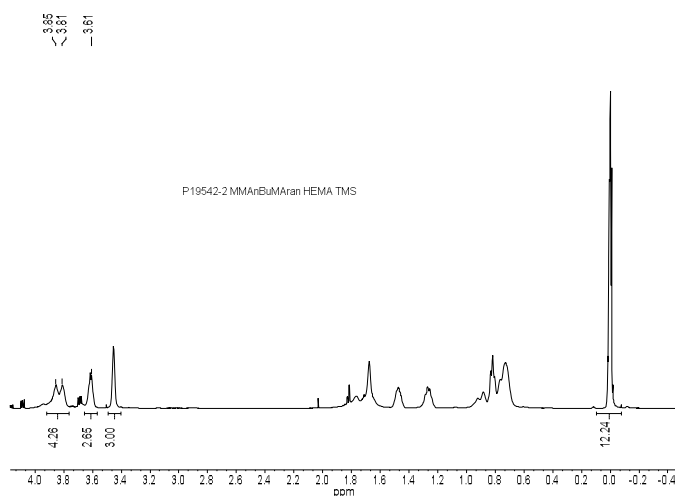
Characterization:

The polymer was characterized by ¹H-NMR and size exclusion chromatography (SEC).

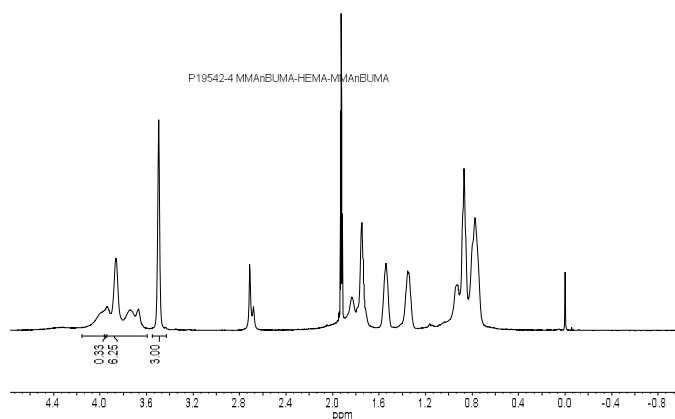
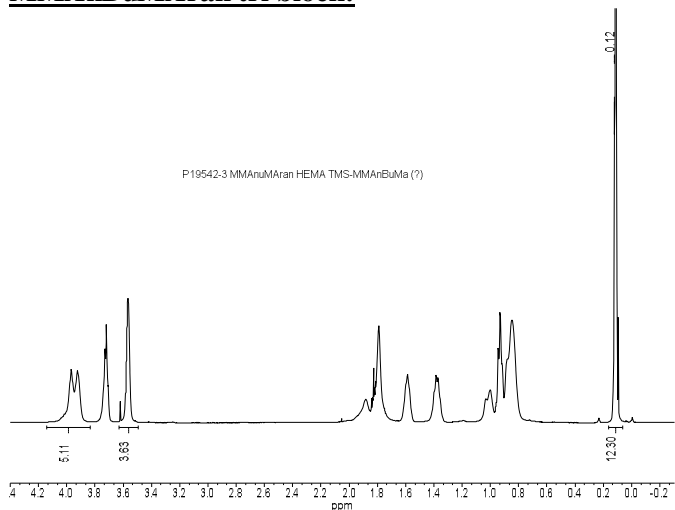
¹H NMR of the First Block



¹H NMR of the Second Block

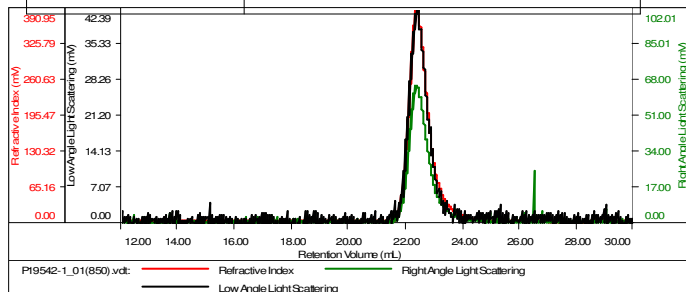


¹H-NMR of the MMA_nBuMA_ran-b-HEMATMS-b-MMA_nBuMA_ran tri block:



SEC of the random copolymer:
Sample ID-P19542-MMAAnBUMAran

Concentration (mg/mL)	3.5946
Sample dn/dc (mL/g)	0.0940
Method File	PS80K-June30-2015-0000.vcm
Column Set	3x PL 1113-6300
Solvent	THF



Sample	MW Number Average (Da)	MW Weight Average (Da)	MW at Peak (Da)	Polydispersity	Intrinsic Viscosity (dL/g)
P19542-1_01(850).vcl	24,885	25,022	24,938	1.005	0.6278