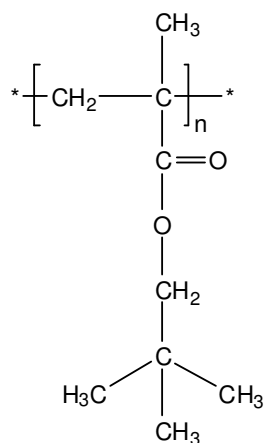


Sample Name: Poly(neopentyl methacrylate)

Sample #: P19547-NPMA

**Structure:**



**Composition:**

$M_n \times 10^3$ (g/mol)	$M_w/M_n$
4.0	1.5

**Synthesis procedure:**

Poly(neopentyl methacrylate) was synthesised by GTP process.

**Characterization:**

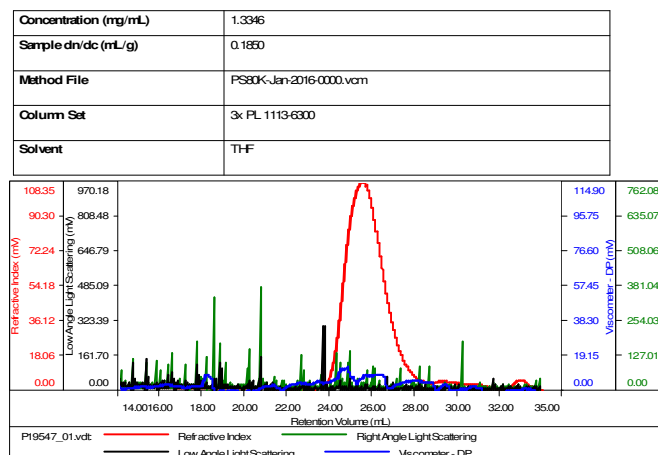
The molecular weight and polydispersity index ( $M_w/M_n$ ) of poly(neopentyl methacrylate) were obtained by size exclusion chromatography (SEC).

**Solubility:**

Poly(neopentyl methacrylate) is soluble in THF, chloroform, toluene, and dioxane. The polymer precipitates from hexanes, methanol, and ethanol.

**SEC elugrame of the homopolymer:**

**Sample ID-P19547-NPMA**



$M_n$  4,000  $M_w$ : 6,000  $M_w/M_n$  1.5