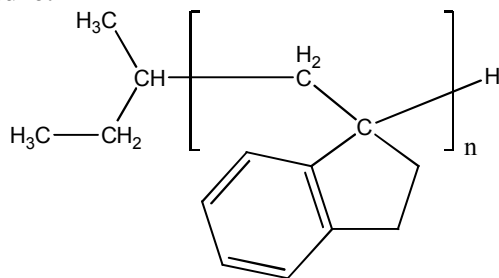


Sample Name: Poly( $\alpha$ -methyleneindane)

Sample #: 19583-MI

**Structure:**



**Composition:**

Mn x 10 <sup>3</sup>	PDI
37.0	2.2

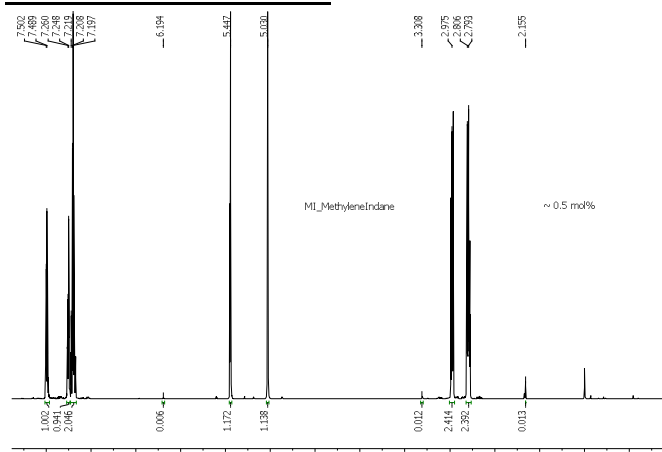
**Synthesis procedure:**

Poly( $\alpha$ -methyleneindane) was prepared by anionic process.

**Characterization:**

The polymer was characterized by <sup>1</sup>H NMR and SEC.

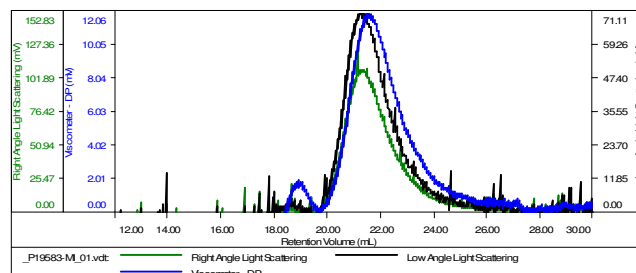
**<sup>1</sup>H NMR of the monomer:**



**SEC of the polymer in THF:**

**Sample ID-P19583-MI**

Concentration (mg/mL)	0.4057
Sample dn/dc (mL/g)	0.1850
Method File	PS80K-Nov-2015-0000.vcm
Column Set	3x PL 1113-6300
Solvent	THF



Sample	MW Number Average (Da)	MW Weight Average (Da)	MW at Peak (Da)	Polydispersity	Intrinsic Viscosity (dL/g)
_P19583MI_01.vcl	36,885	80,313	100,766	2.177	1.8831