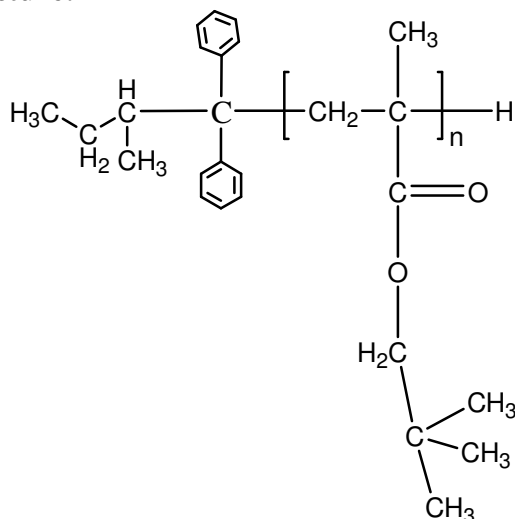


Sample Name: Poly(neopentyl methacrylate)

Sample #: P19707-NPMA

**Structure:**



**Composition:**

$M_n \times 10^3$ (g/mol)	$M_w/M_n$
8.5	2.9

**Synthesis procedure:**

The polymer was synthesized by anionic Process

**Characterization:**

The molecular weight and polydispersity index ( $M_w/M_n$ ) of poly(neopentyl methacrylate) were obtained by size exclusion chromatography (SEC).

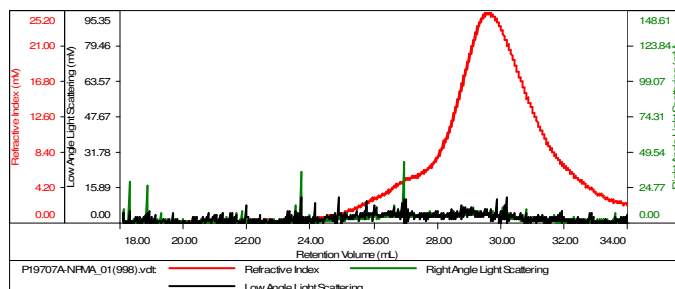
**Solubility:**

Poly(neopentyl methacrylate) is soluble in THF, chloroform, toluene, and dioxane. The polymer precipitates from hexanes, methanol, and ethanol.

SEC elugram of the homopolymer:

**Sample ID-P19707A-NPMA**

Concentration (mg/mL)	0.2800
Sample dn/dc (mL/g)	0.1850
Method File	PS30K-March2016-0001.vcm
Column Set	3x PL 1113-6300
Solvent	THF



Sample	Mn (Da)	Mw (Da)	Mw/Mn	IV (dL/g)	Rh (nm)	Ret Vol (mL)
P19707A-NPMA_01(E	8,516	24,781	2.910	3.9845	13.52	29.560