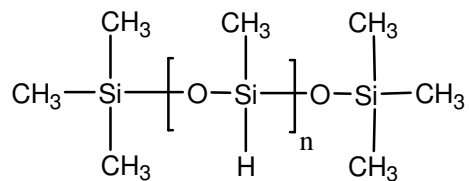


Sample Name: Poly(methyl siloxane)

Sample #: P19714-MS

Structure:



Composition:

$M_n \times 10^3$	PDI
2.0	1.3

Synthesis Procedure:

The polymer was synthesized by condensation polymerization using methyl dichlorosilane and end capping with Trimethyl chlorosilane

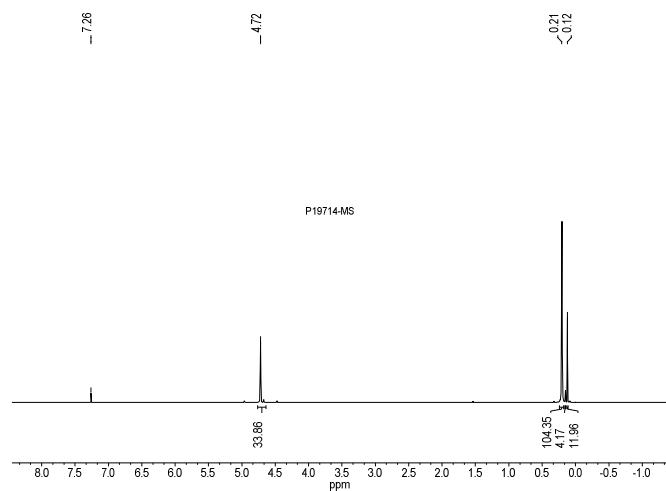
Characterization:

The polymer was characterized by ^1H NMR and size exclusion chromatography (SEC).

Solubility:

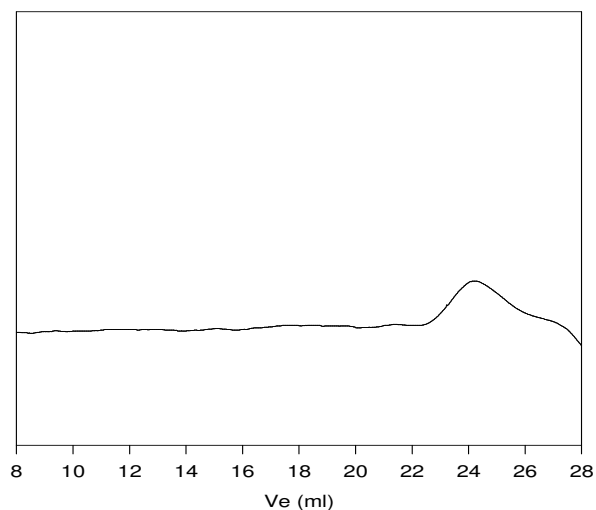
Polysiloxane is soluble in hexane, toluene, cyclohexane, THF and chloroform.

^1H NMR spectrum of Homopolymer:



SEC elugram of Homopolymer:

P19714-MS



Size Exclusion Chromatography in THF at 35 °C w.r.t PDMS standards.

$M_n = 2,000$, $M_w = 2,700$, $PI = 1.3$