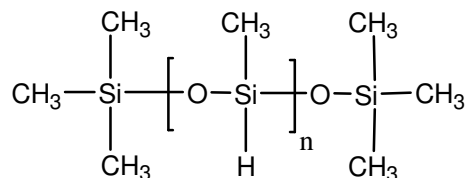


Sample Name: Poly(methyl siloxane)

Sample #: P19715-MS

**Structure:**



**Composition:**

Mn x 10 <sup>3</sup>	PDI
1.8	1.3

**Synthesis Procedure:**

The polymer was synthesized by condensation polymerization using methyl dichlorosilane and end capping with Trimethyl chlorosilane

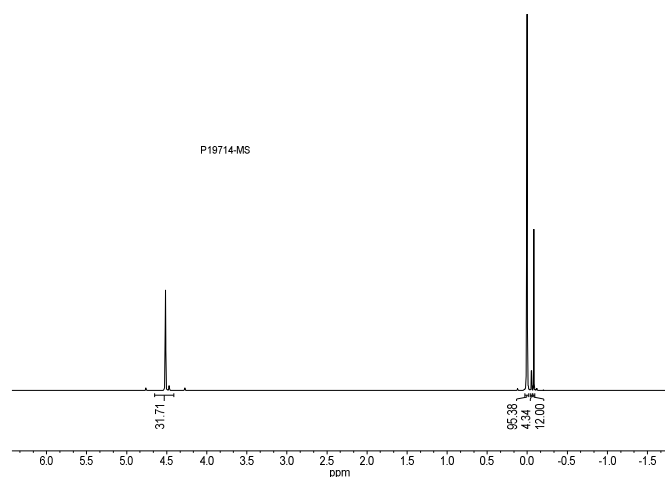
**Characterization:**

The polymer was characterized by <sup>1</sup>H NMR and size exclusion chromatography (SEC).

**Solubility:**

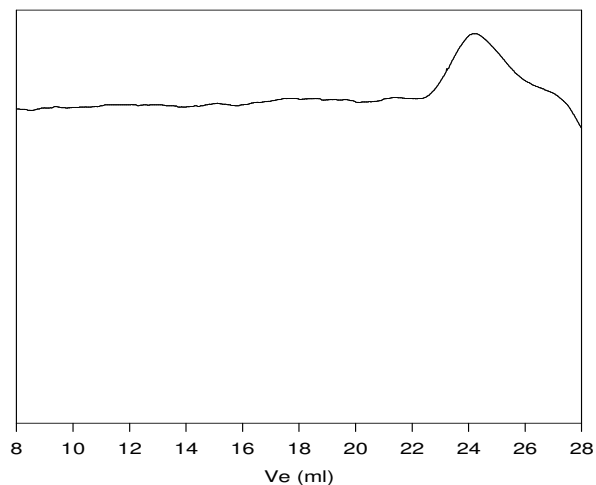
Polysiloxane is soluble in hexane, toluene, cyclohexane, THF and chloroform.

**<sup>1</sup>H NMR spectrum of Homopolymer:**



**SEC of Homopolymer:**

**P19715-MS**



Size Exclusion Chromatography in THF at 35 °C w.r.t PDMS standards.

M<sub>n</sub>=1,800, M<sub>w</sub>=2,400, PI=1.3