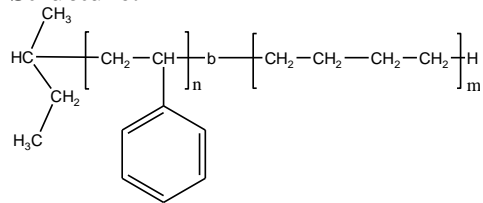


**Sample Name: Tapered Block Copolymer Poly (styrene-b-ethylene)**

**Sample #: P19727-SE tapered**

**Structure:**



**Composition:**

Mn x 10 <sup>3</sup>	PDI
S-b-Bd (k)	
54.0-b-2.3	1.11

**Synthesis Procedure:**

The polymer was synthesized by anionic polymerization

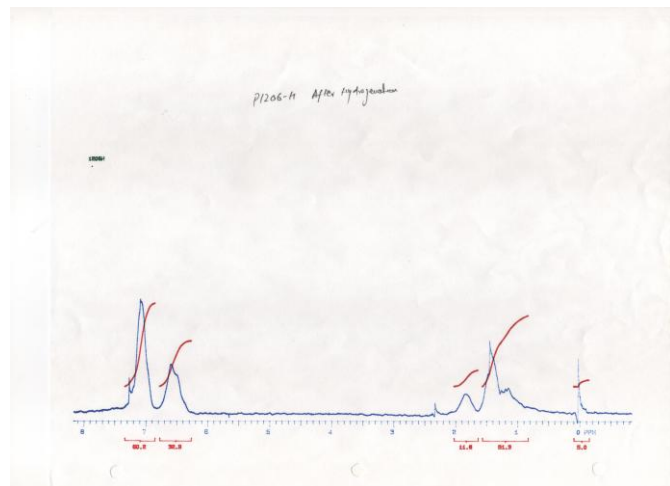
**Characterization:**

The product was characterized by size exclusion chromatography (SEC) and <sup>1</sup>H NMR.

**Solubility:**

Polymer is soluble in hot toluene and in dichlorobenzene.

**<sup>1</sup>H-NMR Spectrum of the block copolymer:**



**SEC of the block copolymer:**

**P19727-SE tapered**

