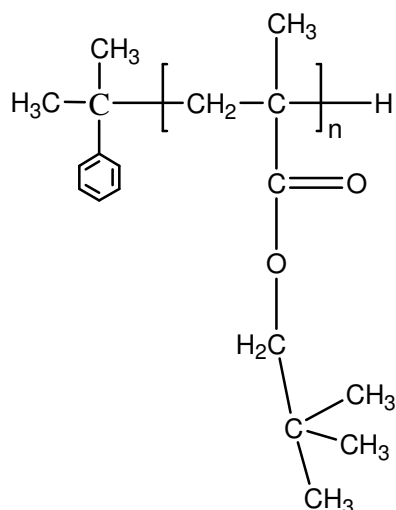


Sample Name: Poly(neopentyl methacrylate)

Sample #: P19804-NPMA

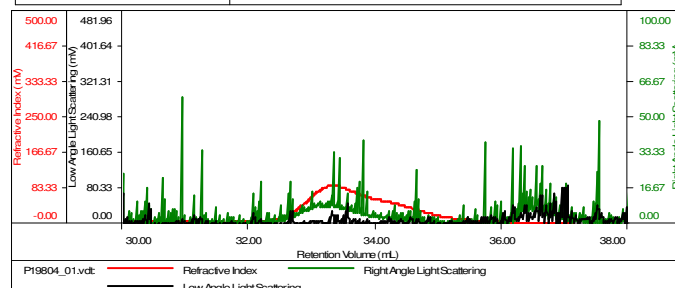
**Structure:**



SEC elugram of the homopolymer:

**Sample ID-P19804-NPMA**

Concentration (mg/mL)	0.9192
Sample dn/dc (mL/g)	0.0940
Method File	PS80K-March2016-0001.vom
Column Set	3x PL 1113-6300
Solvent	THF



Sample	Mn (Da)	Mw (Da)	Mw/Mn	IV (dL/g)	Rh (nm)	Elut Vol (mL)
P19804_01.volt	12,362	17,966	1.453	0.7169	8.06	33.317

**Composition:**

$M_n \times 10^3$ (g/mol)	$M_w/M_n$
13.0	1.5

**Synthesis procedure:**

The polymer was synthesized by anionic Process

**Characterization:**

The molecular weight and polydispersity index ( $M_w/M_n$ ) of poly(neopentyl methacrylate) were obtained by size exclusion chromatography (SEC).

**Solubility:**

Poly(neopentyl methacrylate) is soluble in THF, chloroform, toluene, and dioxane. The polymer precipitates from hexanes, methanol, and ethanol.