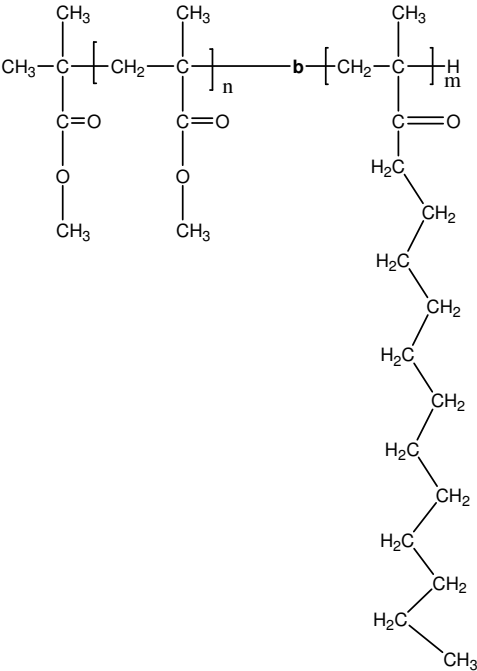


Sample Name:  
Poly( Methyl methacrylate-b-Lauryl methacrylate)

Sample #: P19815-MMALMA

Structure:



Composition:

Mn × 10 <sup>3</sup>	PDI
MMA-b-LMA	
2.7-b-3.0	1.24

Synthesis Procedure:

The polymer was synthesized by GTP process. Polymer was precipitated into methanol/water.

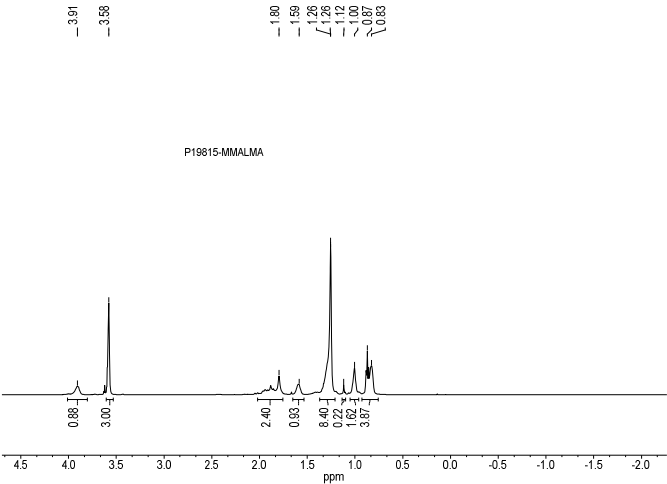
Characterization:

The polymer was characterized by SEC and HNMR analysis.

Solubility:

The block copolymer is soluble in THF and CHCl<sub>3</sub>.

**<sup>1</sup>H-NMR Spectrum of the PMMA Block**



**SEC elugram of the block copolymer:**

Sample ID-P19815-MMALMA

Concentration (mg/mL)	0.195
Sample dilute (mL/g)	0.050
Method File	Peak4Method19815001.com
Column Set	3x PL 1103 (500)
Solvent	THF

