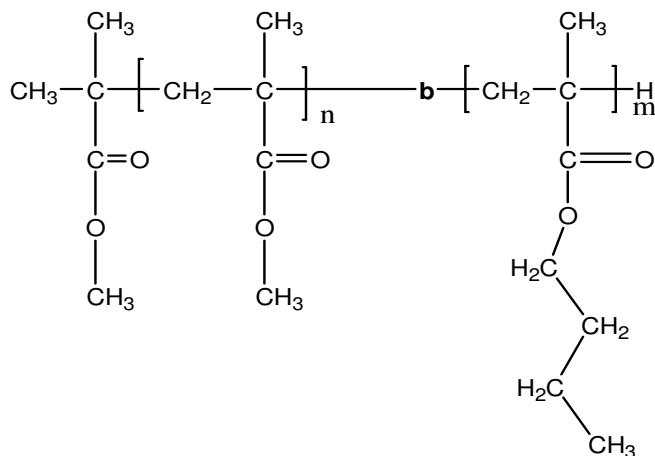


Sample Name:
Poly(methyl methacrylate-*b*-n-butyl methacrylate)

Sample # P19819-MMA_nBuMA

Structure:



Composition:

$M_n \times 10^3$	PDI
PMMA- <i>b</i> -PnBuMA	
1.7- <i>b</i> -3.0	1.15

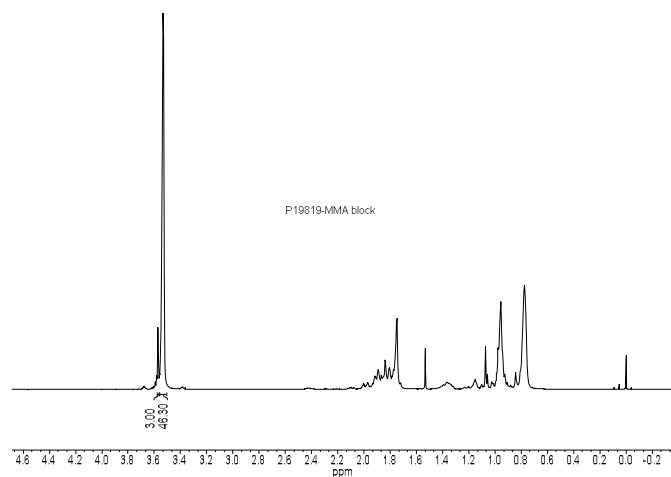
Synthesis Procedure:

The polymer was synthesized by GTP method.

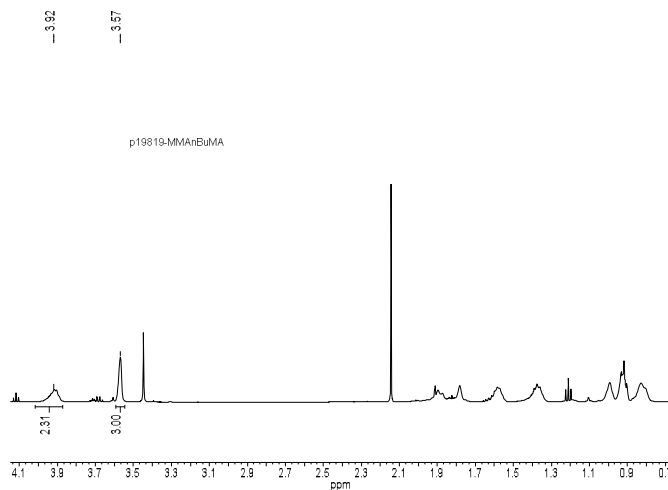
Characterization:

The polymer was analyzed by ^1H NMR spectroscopy and size exclusion chromatography (SEC).

^1H NMR of the first block (PMMA) in CDCl_3 :



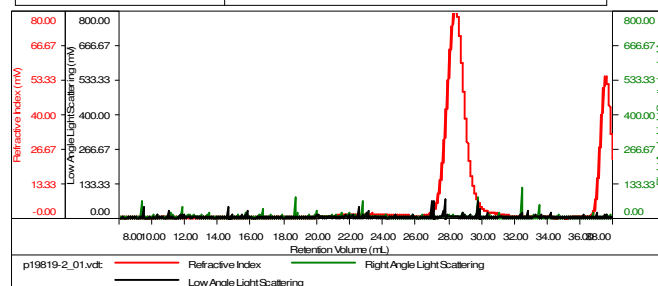
^1H NMR of the diblock copolymer in CDCl_3 :



SEC elugram of the diblock copolymer:

Sample ID-P19819-MMA-nBuMA

Concentration (mg/mL)	0.5524
Sample dn/dc (mL/g)	0.1170
Method File	PS80K-March2016-0001.vcm
Column Set	3x PL 1113-6300
Solvent	THF



Sample	Mn (Da)	Mw (Da)	Mw/Mn	IV (dL/g)	Rh (nm)	Ret Vol (mL)
p19819-2_01.vcl	4,790	5,498	1.148	1.2849	5.73	28.417