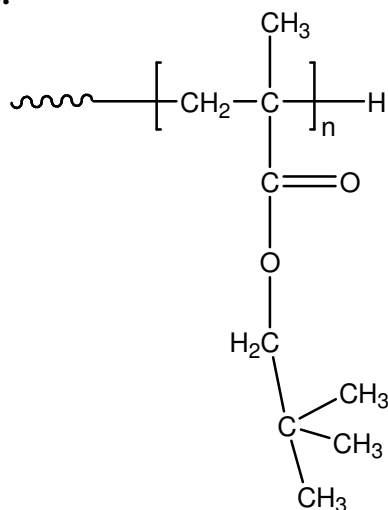


Sample Name: Poly(neopentyl methacrylate)

Sample #: P19867-NPMA

Structure:



Composition:

$M_n \times 10^3$ (g/mol)	M_w/M_n
5.0	1.5

Synthesis procedure:

The polymer was synthesized by anionic process

Characterization:

The molecular weight and polydispersity index (M_w/M_n) of poly(neopentyl methacrylate) were obtained by size exclusion chromatography (SEC).

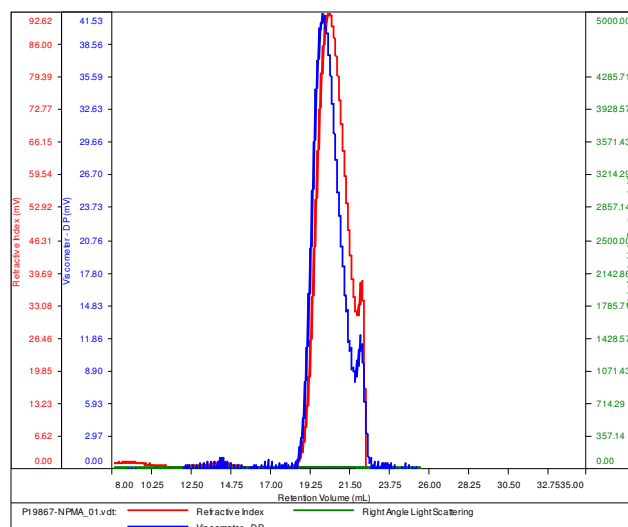
Solubility:

Poly(neopentyl methacrylate) is soluble in THF, chloroform, toluene, and dioxane. The polymer precipitates from hexanes, methanol, and ethanol.

SEC elugram of the homopolymer:

P19867-NPMA

Conc (mg/mL)	10.2100
dn/dc (mL/g)	0.0650
Method	ps80k-May2016-0002.vcm
Solvent	DMF w 0.023M LiBr
Column	PSS



Sample	Mn	Mw	Mp	Mw/Mn	IV
P19867-NPMA_01.vdt	5,190	7,864	9,596	1.515	0.0796