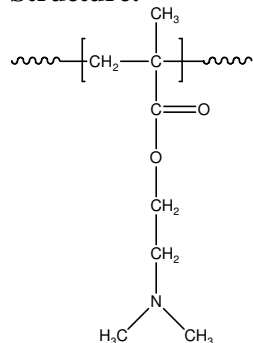


Sample Name:
Poly(N,N-dimethylaminoethyl methacrylate)

Sample #: **P19978**
 (obtained by RAFT process)

Structure:



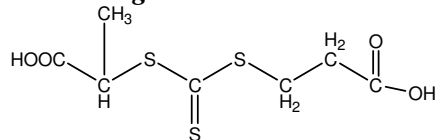
Composition:

| Mn × 10 ³ | PDI |
|----------------------|-----|
| 59.0 | 1.4 |

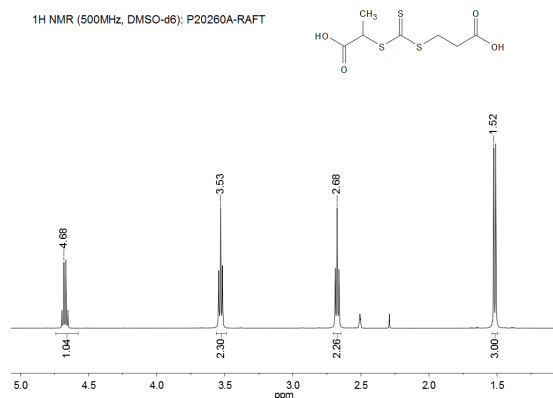
Synthesis Procedure:

Poly(N,N-dimethyl aminoethyl methacrylate) is obtained by RAFT process..

RAFT reagent used:



¹H NMR spectrum of the RAFT reagent:



Characterization:

The molecular weight and polydispersity index (PDI) are obtained by size exclusion chromatography (SEC) in THF. SEC analysis was performed on a Varian liquid chromatograph equipped with refractive and UV light scattering detectors. Three SEC columns from Supelco

(G6000-4000-2000 HXL) were used with triple detectors from Viscotek Co.

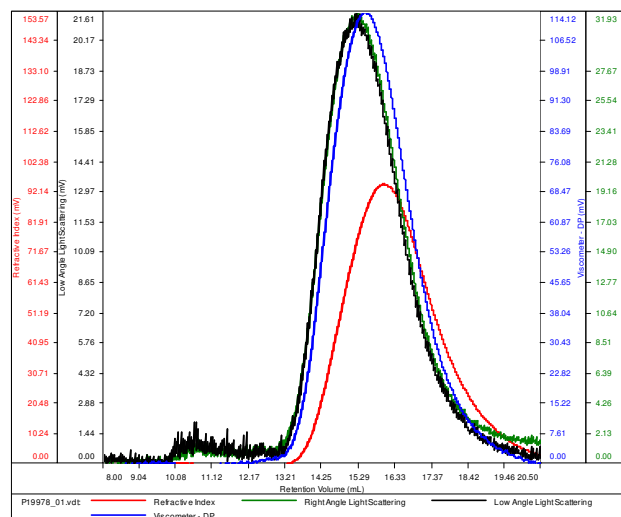
Solubility:

Poly(N,N-dimethylaminoethyl methacrylate) is soluble in THF, CHCl₃.

SEC elugram of Homopolymer:

P19978

| | |
|--------------|----------------------------|
| Conc (mg/mL) | 13.0258 |
| dn/dc (mL/g) | 0.0800 |
| Method | PS80k-May-25-2016-0000.vcm |
| Solvent | DMF w 0.023M LiBr |
| Column | PSS |



| Sample | Mn | Mw | Mp | Mw/Mn | IV |
|---------------|--------|--------|--------|-------|--------|
| P19978_01.vcl | 58,922 | 81,782 | 70,741 | 1.388 | 0.2592 |