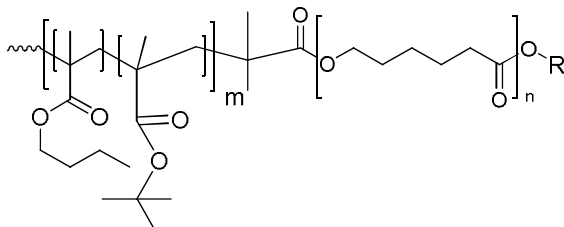


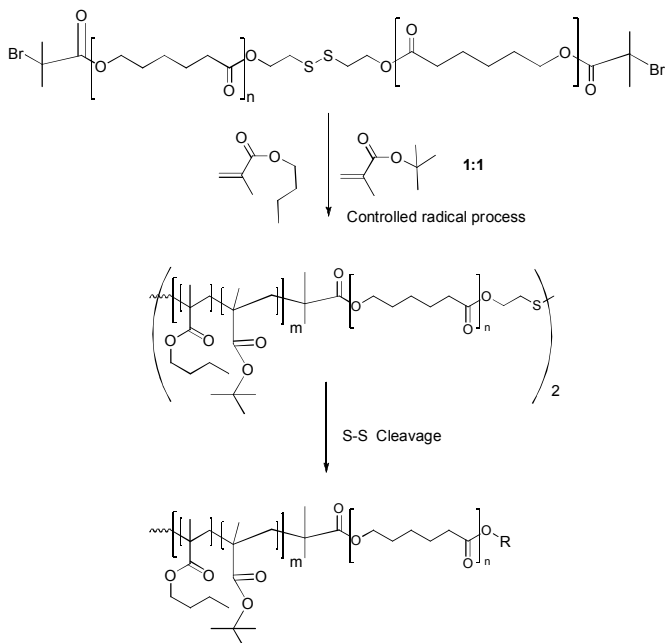
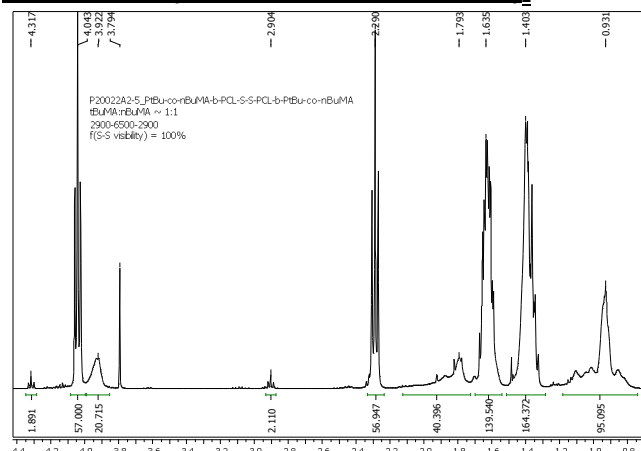
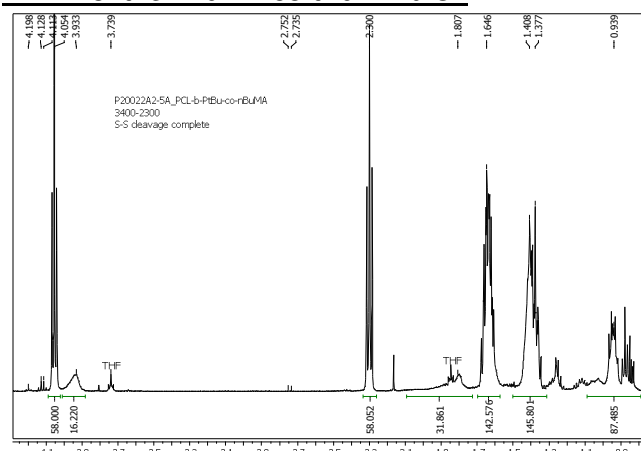
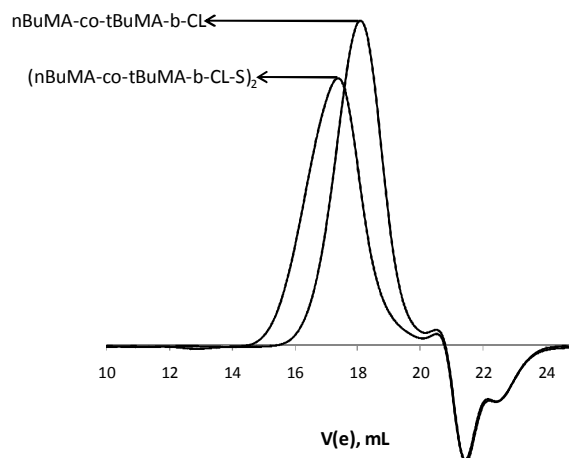
**Sample Name:**

**Poly[(n-butyl methacrylate-co-t-butyl methacrylate)-b- $\epsilon$ -caprolactone]**

**Sample #:** P20022A2-5A-nBuMA-tBuMA-ran-b-CL

**Structure:****Composition:**

$M_n \times 10^3$ nBuMA-co-tBuMA-b-CL	PDI
2.3–3.4	1.4
nBuMA:tBuMA	1:1
May contain up to 10% of residual SH functionality	

**Synthesis Procedure:****HNMR of the (nBuMA-co-tBuMA-b-CL-S)<sub>2</sub>****HNMR of the nBuMA-co-tBuMA-b-CL****SEC of the block copolymer:****P20022A2-5A-nBuMA-tBuMA-ran-b-CL**

Before cleavage,  $M_w / M_n = 1.5$

After cleavage,  $M_w / M_n = 1.4$