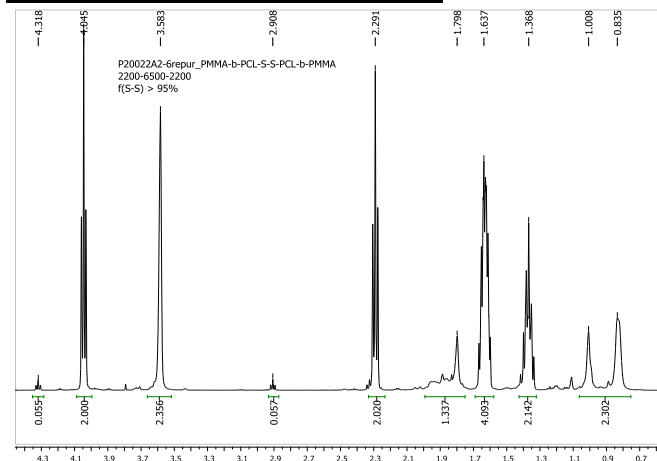
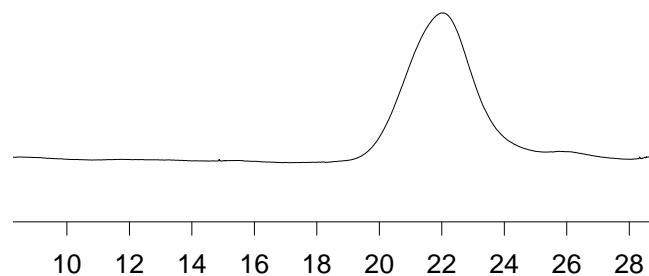


**Sample Name:**

**Characterization:**  
By SEC and HNMR:

**HNMR of the MMA-CL-S-S-CLMMA****SEC of the block copolymer:****P2002A2-6-MMA-CL-SS-CL-MMA**

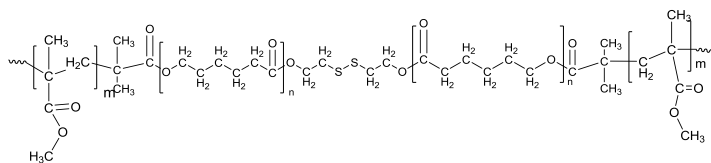
**V(el), mL**

Size-exclusion chromatography of the product:

MMA-CL-S-S-CLMMA,  $M_w / M_n = 1.3$

**Poly(methyl methacrylate-b-ε-caprolactone-b- methyl methacrylate) bearing disulfide linkage in the center of the polymer chain**

**Sample #: P2002A2-6-MMA-CL-S-S-CLMMA**

**Structure:****Composition:**

$M_n \times 10^3$ MMA-b-CL-S-S-CL-MMA	PDI
2.3-6.5-2.3	1.3
S-S functionality >95%	

**Synthesis Procedure:**