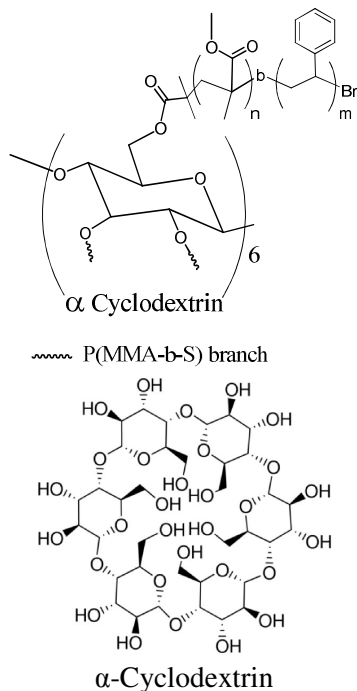


Sample Name: Star like Poly[(methyl methacrylate)-b-styrene] bearing α -Cyclodextrin as a core
Average number of arms: 8

Sample #: P20142-2-8MMAS

Structure:

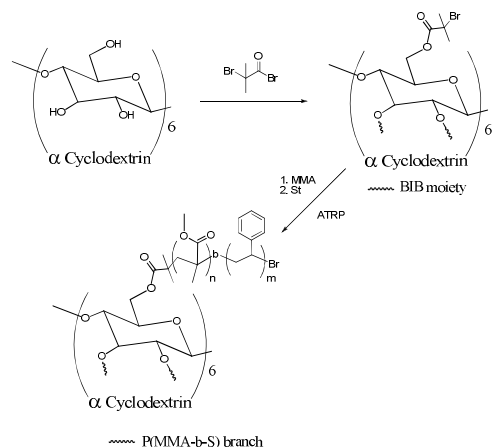


Composition:

$M_n \times 10^3$:	PDI
41.0 (total)	1.09
5.3 (branch)	1.28
MMA:St	2.3 : 1

Synthesis Procedure:

The polymer was synthesized by ATRP process.



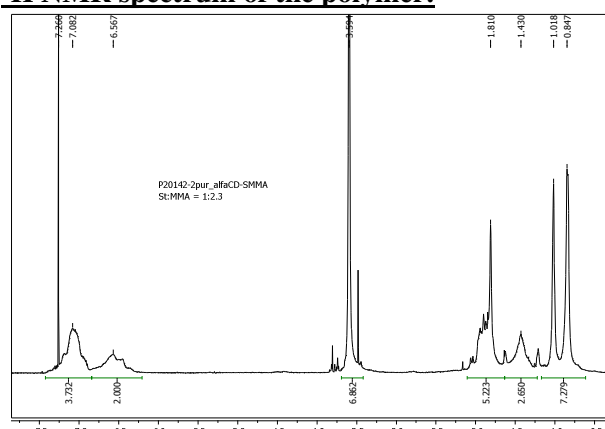
Scheme 1.

Characterization:

Molecular weight of the polymer was obtained by size exclusion chromatography (SEC): The absolute molecular weight of the star-like polymer was determined by light scattering detector-Viscotek 270 model.

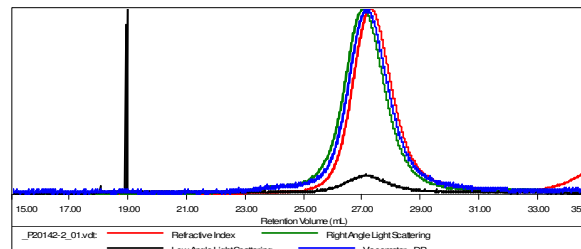
The molecular weight of each arm was determined after complete hydrolysis of the product in basic conditions.

^1H NMR spectrum of the polymer:



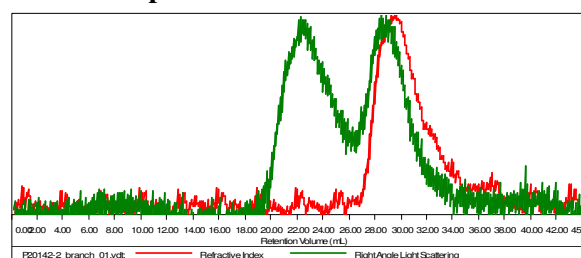
SEC elugram of the polymer:

Sample P20142-2-8MMAS



Sample	MW Number Average (Da)	MW Weight Average (Da)	MW at Peak (Da)	Polyspersity	Intrinsic Viscosity (dL/g)
_P20142-2_01.vdt	40,980	44,707	41,909	1.091	0.0000

Sample P20142-2-8MMAS branch



Sample	MW Number Average (Da)	MW Weight Average (Da)	MW at Peak (Da)	Polyspersity	Intrinsic Viscosity (dL/g)
P20142-2_branch_01.vdt	5,361	6,850	6,615	1.278	0.0000