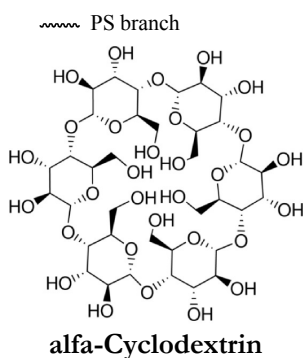
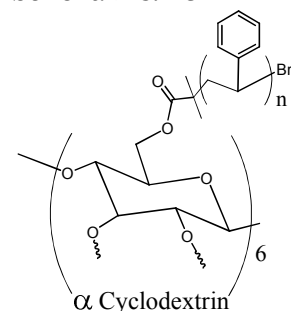


Sample Name: P20145-1-15S

Star like Polystyrene bearing α -Cyclodextrin as a core

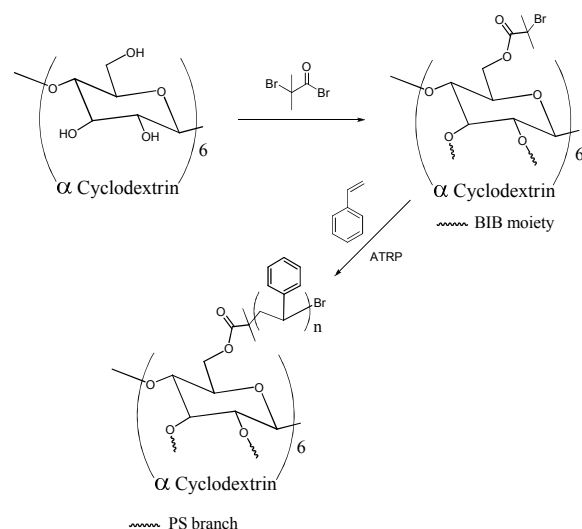
Average number of arms: 15



Mn x 10 ³ (total)	PDI
87.0	1.62
Branch molecular weight 6.1	1.17

Synthesis Procedure:

By ATRP Process:



Scheme 1.

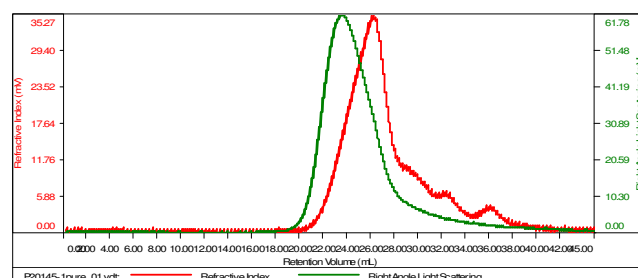
Characterization:

Molecular Weight: Size exclusion chromatography (SEC): The absolute molecular weight of the star-like polymer was determined by light scattering detector-Viscotek 270 model.

The molecular weight of each arm was determined after a complete hydrolysis of the product in basic conditions.

Sample ID: P20145-1-alfaCD-St

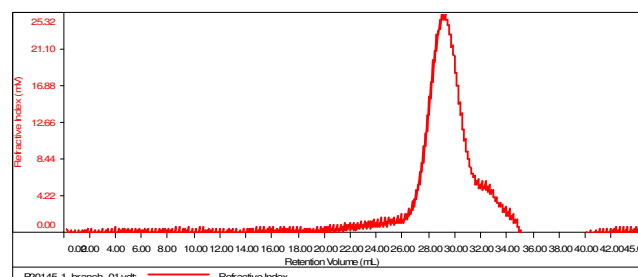
Concentration (mg/mL)	2.0734
Sample ch/dic (mL/g)	0.1850
Method File	PS80K-Jan22-2015-0001.vcm
Column Set	3x PL 1113-6300
Solvent	THF



Sample	MW Number Average (Da)	MW Weight Average (Da)	MW at Peak (Da)	Polydispersi	Intrinsic Viscosity (dL/g)
P20145-1pure_01.vdt	87,045	140,827	65,722	1.618	0.0000

Sample ID: P20145-1_St-branch

Concentration (mg/mL)	1.1482
Sample ch/dic (mL/g)	0.1850
Method File	PS80K-Jan22-2015-0001.vcm
Column Set	3x PL 1113-6300
Solvent	THF



Sample	MW Number Average (Da)	MW Weight Average (Da)	MW at Peak (Da)	Polydispersi	Intrinsic Viscosity (dL/g)
P20145-1_branch_01.vdt	6,136	7,159	5,235	1.167	0.0000