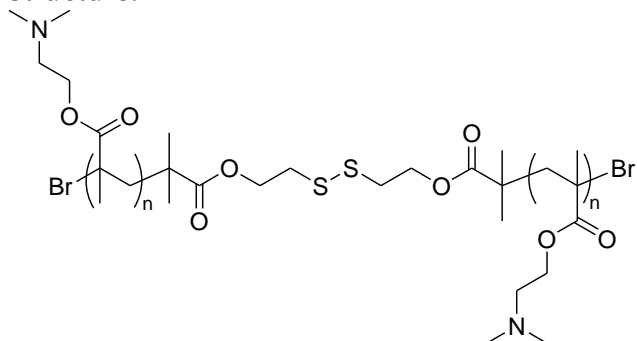
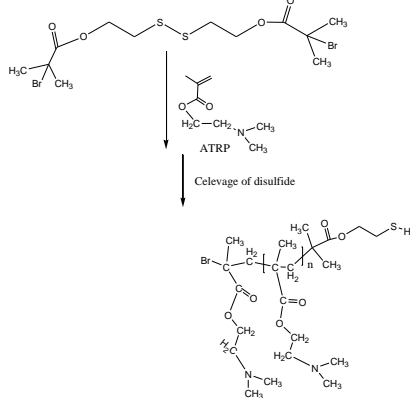
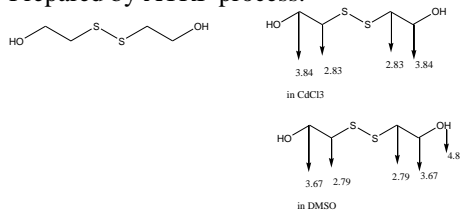


Sample Name:**Poly(2-(Dimethylamino)ethyl methacrylate)****Bearing disulfide linkage****Sample #: P20168A-DMAEMA-2S****Structure:****Composition:**

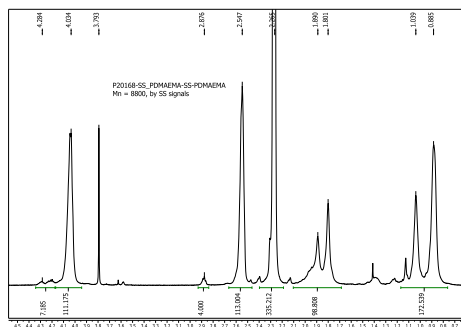
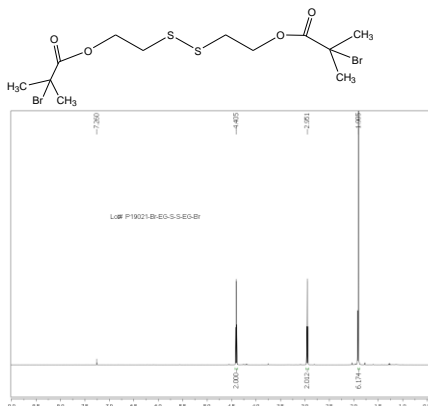
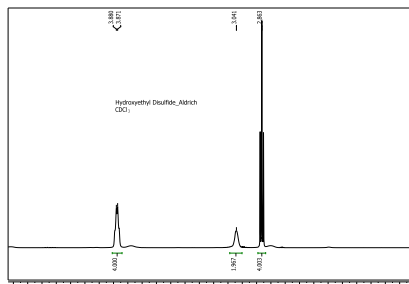
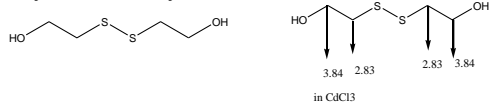
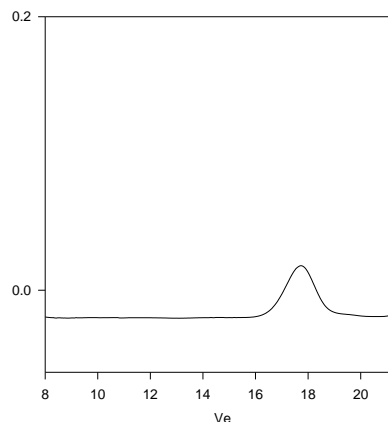
$M_n \times 10^3$	PDI
8.5	1.3
Syndio:hetero:iso ratio	55:40:5
SS functionality	>90%

Synthesis Procedure:

Prepared by ATRP process:

**Characterization:**

By SEC and by HNMR

**SEC of Sample:****P20168A-DMAEMA-2S**

Size Exclusion Chromatography of Thiol end Poly(NN-Dimethyl amino ethyl methacrylate):

1. Disulfide stage: $M_n=8,500$, $M_w=11,000$, $M_w/M_n=1.3$