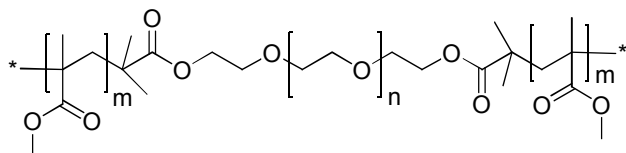


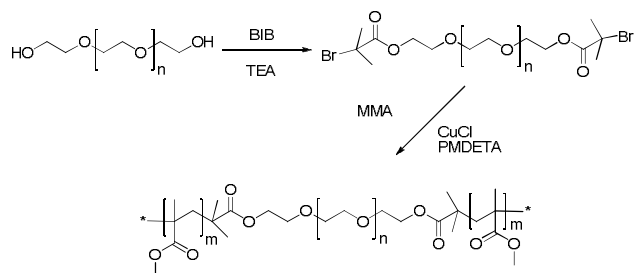
**Sample Name:**

Poly(methyl methacrylate-*b*-ethylene oxide-*b*-methyl methacrylate)

Sample ID: P20240-MMAEOMMA

**Structure:****Composition:**

$M_n \times 10^3$ MMA- <i>b</i> -EO- <i>b</i> -MMA	$M_w/M_n$
2.2- <i>b</i> -1.0- <i>b</i> -2.2	1.35

**Synthetic Procedure:****Characterization:**

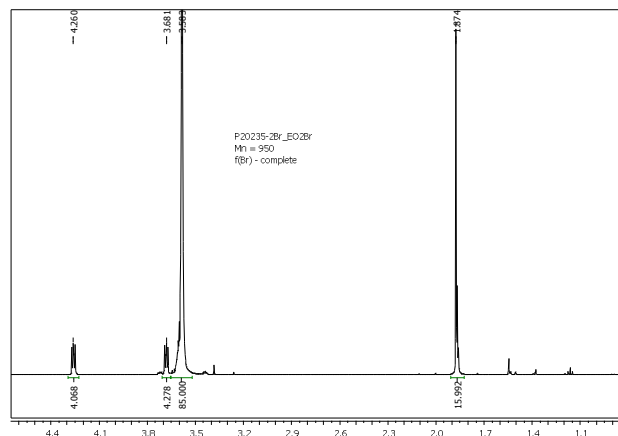
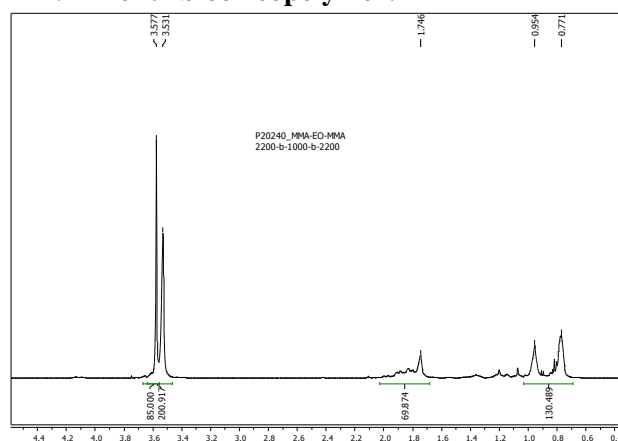
The molecular weight characterization was performed by  $^1\text{H}$  NMR and size exclusion chromatography (SEC) using refractive index and light-scattering detectors.

**Composition:**

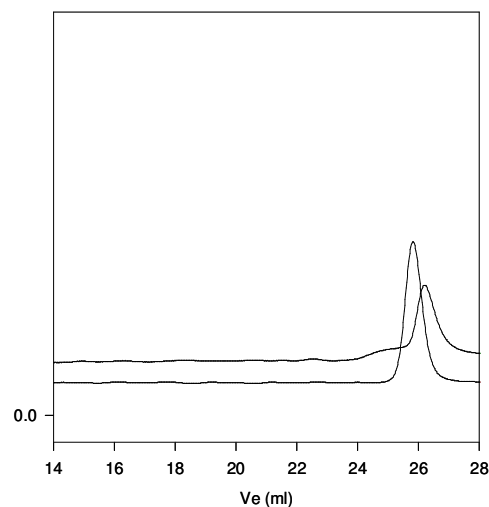
The ratio between blocks was determined by  $^1\text{H}$  NMR.

**Solubility:**

Polymer is soluble in acetone, THF, chloroform. It was precipitates from hexane / ether.

 **$^1\text{H}$  NMR of dibromo-terminated PEO:** **$^1\text{H}$  NMR of triblock copolymer:****SEC of PEO and PMMA-PEO-PMMA:**

P20240-MMAEOMMA



Size exclusion chromatography of  
poly MMA-*b*-ethylene oxide-*b*-MMA

— dibromo terminated Polyethylene oxide  $M_n=1300$ ,  $PI=1.15$   
— Block Copolymer MMA-PEO-MMA  
 $M_n$ : 2,200-*b*-1,300-*b*-2,200,  $PI=1.35$   
Composition from HNMR