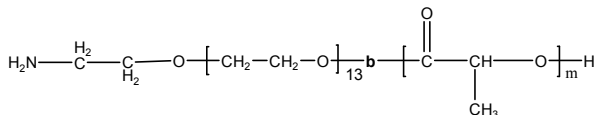


Sample Name:

**Amino end functionalized
Poly(ethylene oxide -b- lactide (DL
form))**

Sample #: **P10275B-NH2EGLA**

Structure:



Composition:

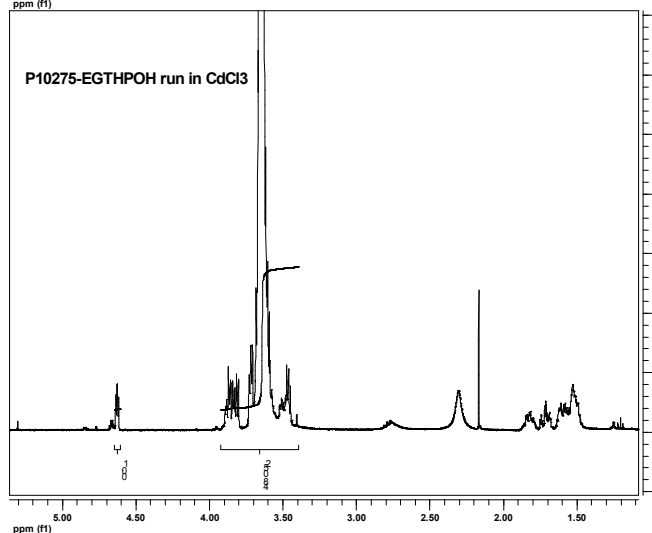
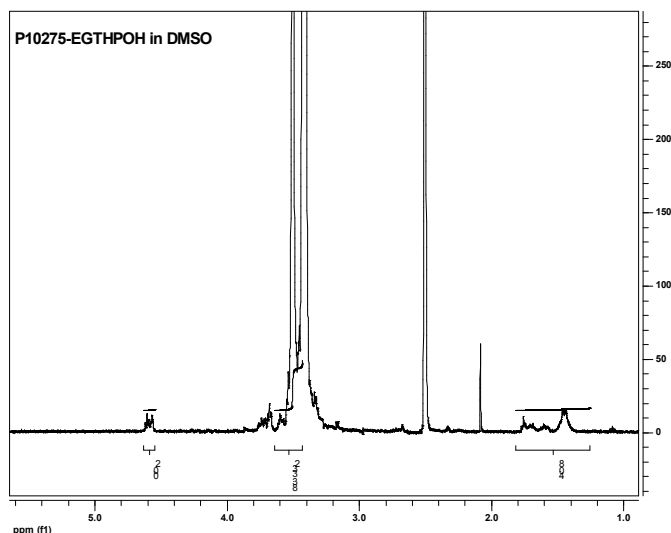
Mn x 10 ³ NH2 EG-b-PLA	PDI	NH2 functionality
2.6-b-2.6	1.10	>95%

Characterization:

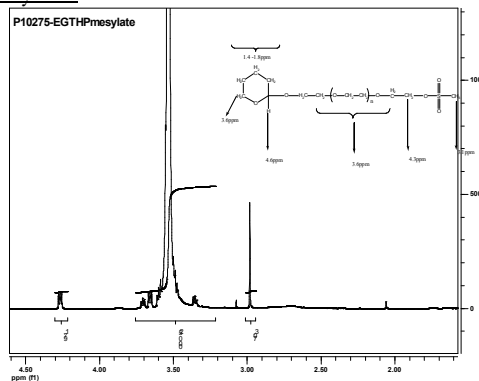
Polymer was analyzed by size exclusion chromatography (SEC) to obtain the molecular weight and polydispersity index (PDI). The polymer obtained at each step and the final block copolymer composition was calculated from ¹H-NMR spectroscopy by comparing the peak area of the ethylene oxide protons at about 3.6 ppm with the ε-caprolactone protons at about 4.1 ppm.

¹H-NMR Spectrum of the polymer

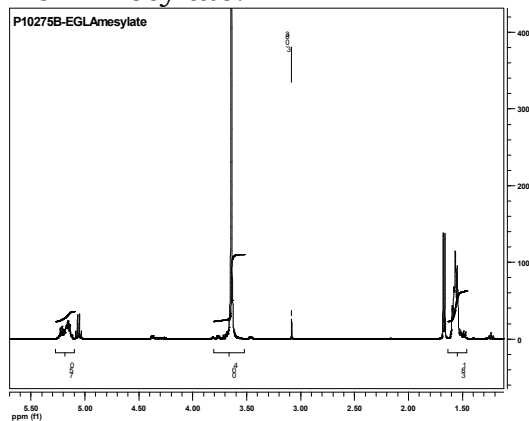
α-OH-ω-pyran terminated PEG used in this polymer



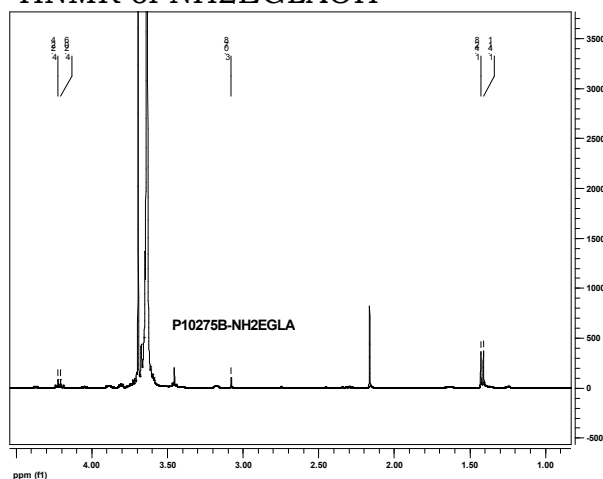
α-Mesytylate-ω-pyran terminated PEG used in this polymer



HMR of the diblock copolymer
EGLAMesylate:

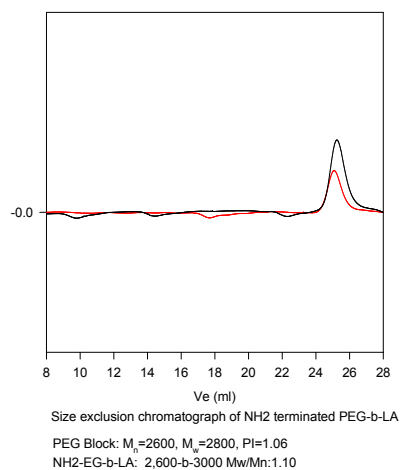


HNMR of NH2EGLAOH



SEC of the block copolymer:

P10275B-NH2EGLA



Size exclusion chromatograph of NH2 terminated PEG-b-LA

PEG Block: M_n=2600, M_w=2800, PI=1.06

NH2-EG-b-LA: 2,600-b-3000 Mw/Mn:1.10