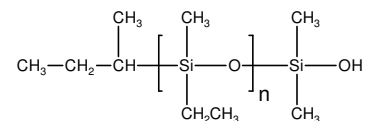
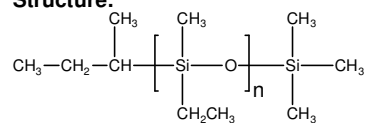


**Sample Name:** Poly(ethyl methyl siloxane)

**SEC of Homopolymer:**

**Sample #: 2142-EMS-B2**

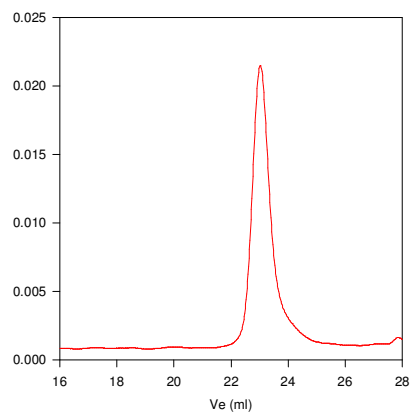
**Structure:**



**Composition:**

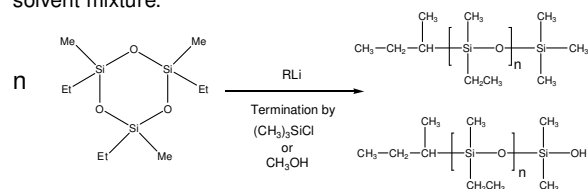
Mn x 10 <sup>3</sup>	Mw/Mn
12.6	1.43

**P2142-EMS-B2**



**Synthesis Procedure:**

The polymerization of the cyclic trimer (1,3,5-trimethyl-1,3,5-triethyl cyclotrisiloxane-D3) was initiated with a monofunctional lithium based initiator in a polar / non-polar solvent mixture.



**Characterization:**

The molecular weight and polydispersity index (PDI) are obtained by size exclusion chromatography.

**Solubility:**