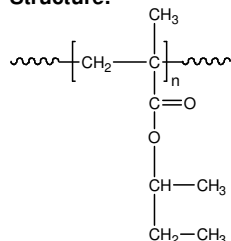


Sample Name: **Poly(s-butyl methacrylate)**

Sample #: **P2352-sBuMA**

**Structure:**

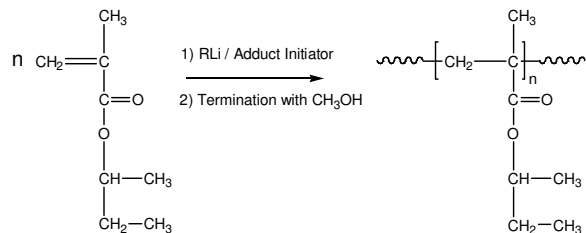


**Composition:**

$M_n \times 10^3$	PDI
24.8	1.50

**Synthesis Procedure:**

Poly(s-butyl methacrylate) is obtained by living anionic polymerization of s-butyl methacrylate. The reaction scheme used for the polymer synthesis is shown below:



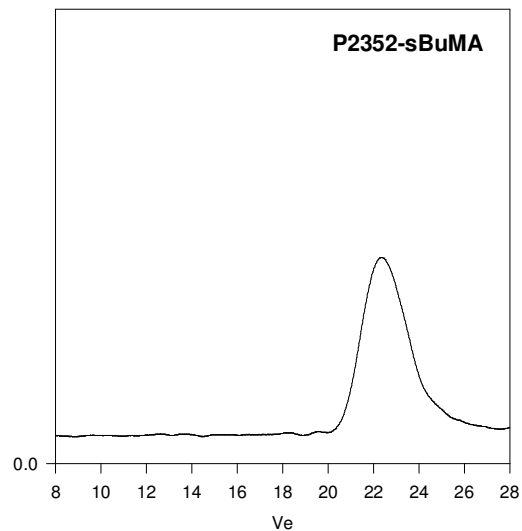
**Characterization:**

The molecular weight and polydispersity index (PDI) of Poly(s-butyl methacrylate) are obtained by size exclusion chromatography.

**Solubility:**

Poly(s-butyl methacrylate) is soluble in THF,  $\text{CHCl}_3$ , toluene and dioxane. The polymer precipitates from cold methanol and ethanol.

**SEC of Homopolymer:**



Size Exclusion Chromatography of Poly(Sec-butyl methacrylate):

$M_n = 24800$ ,  $M_w = 37500$   $PI = 1.5$