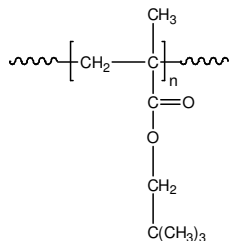


Sample Name: **Poly(neopentyl methacrylate)**

Sample #: **P3360-NPMA**

**Structure:**

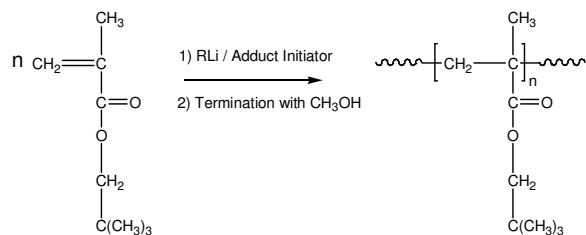


**Composition:**

$M_n \times 10^3$	PDI
20.0	1.04

**Synthesis Procedure:**

Poly(neopentyl methacrylate) is obtained by living anionic polymerization of neopentyl methacrylate. The reaction scheme used for the polymer synthesis is shown below:



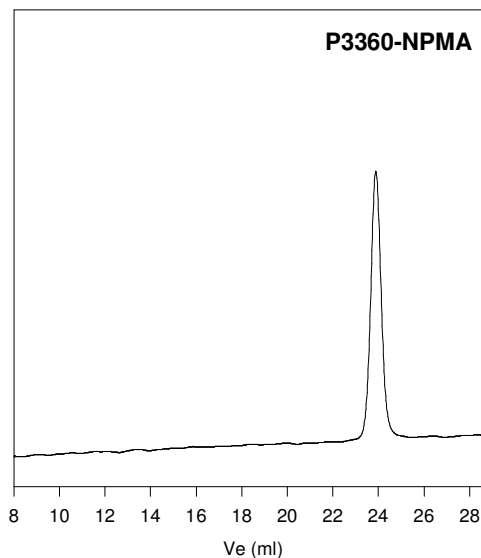
**Characterization:**

The molecular weight and polydispersity index (PDI) of Poly(neopentyl methacrylate) are obtained by size exclusion chromatography.

**Solubility:**

Poly(neopentyl methacrylate) is soluble in THF,  $\text{CHCl}_3$ , toluene and dioxane. The polymer precipitates from hexanes, methanol and ethanol.

**SEC of Homopolymer:**



Size Exclusion Chromatography of Poly(neopentyl methacrylate)

$M_n=20000$ ,  $M_w=20800$   $PI=1.04$