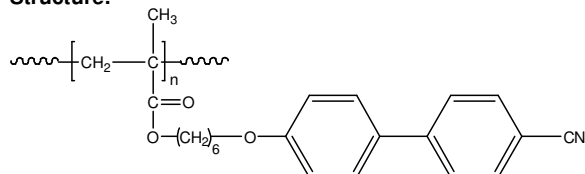
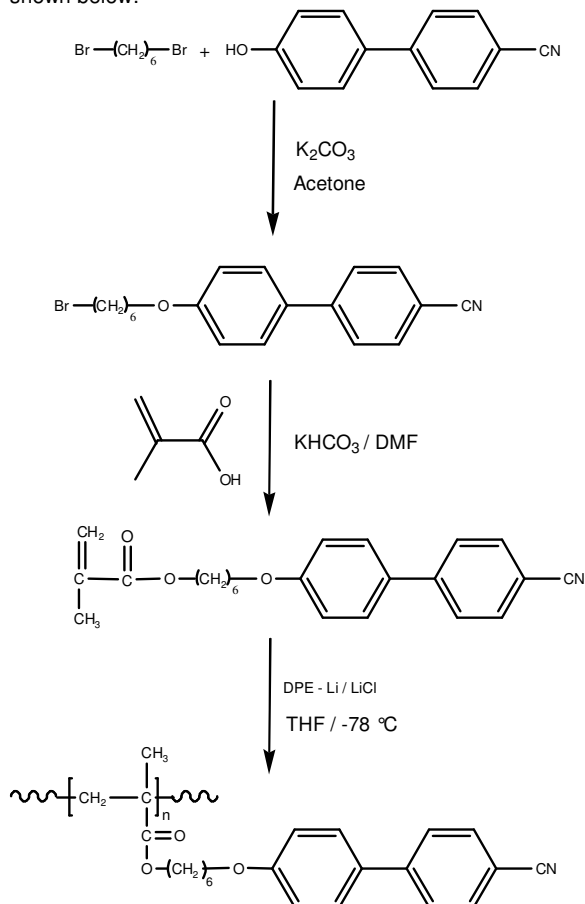


Sample Name:**Poly(6-(4'-cynaobiphenyl-4-yloxy)hexyl methacrylate)****Sample #: p3418-4CNBPHMA****Structure:****Composition:**

Mn x 10 ³	PDI
194.0	1.40

Synthesis Procedure:

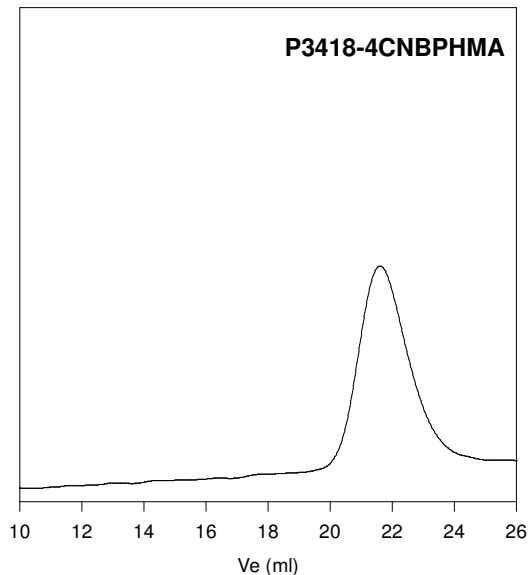
Poly(6-(4'-cynaobiphenyl-4-yloxy)hexyl methacrylate) is obtained by living anionic polymerization of the monomer. The reaction scheme used for the polymer synthesis is shown below:

**Characterization:**

The molecular weight and polydispersity index (PDI) of Poly(6-(4'-cynaobiphenyl-4-yloxy)hexyl methacrylate) are obtained by size exclusion chromatography.

Solubility:

Poly(6-(4'-cynaobiphenyl-4-yloxy)hexyl methacrylate) is soluble in THF, acetone, dichloromethane and chloroform but insoluble in hexane, ethanol and water.

SEC of Homopolymer:

Size exclusion chromatography of 4CNBPHMA:

$M_n = 194000$, $M_w = 272000$, $PI = 1.40$