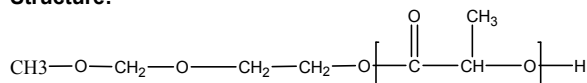


Sample Name: Polylactide

Sample #: P10389C-LA (L-Form)

Structure:

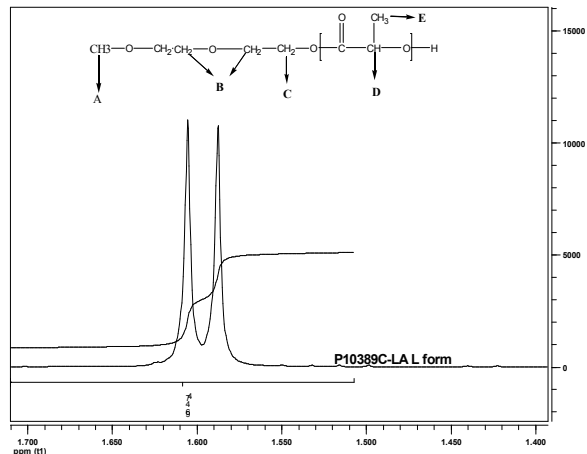
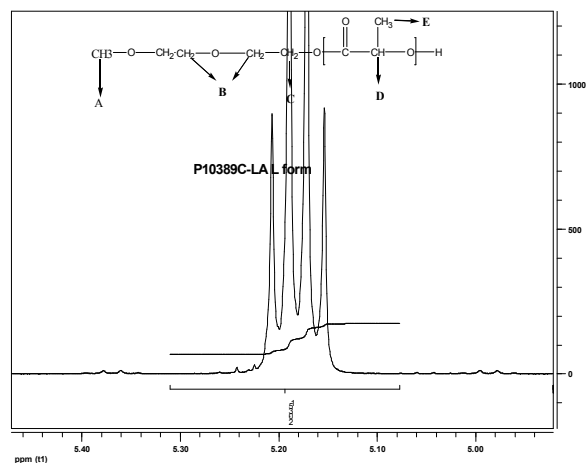
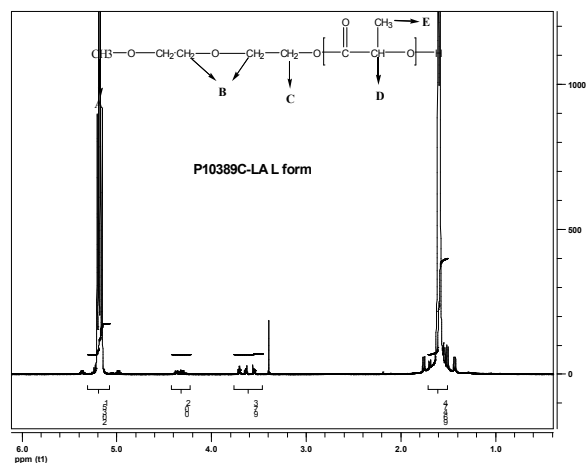
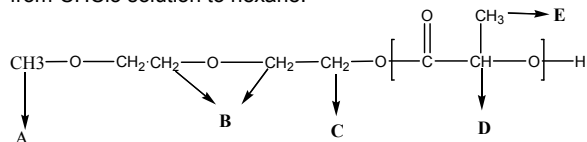


Composition:

Mn x 10 ³	PDI
11.0	1.35

Purification:

Unreacted monomer was removed by repeated precipitation from CHCl₃ solution to hexane.



Characterization:

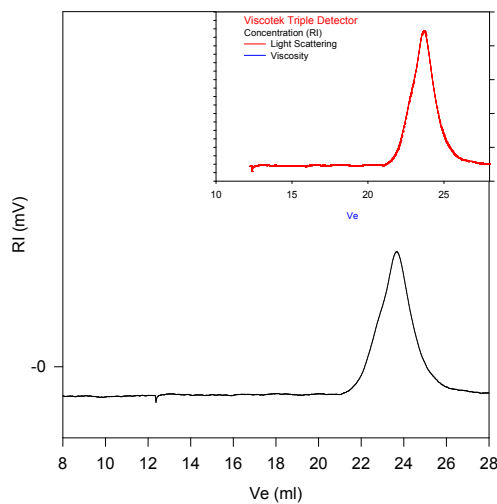
The molecular weight and polydispersity index (PDI) are obtained by size exclusion chromatography.

Solubility:

Polymer is soluble in toluene, THF, CHCl₃ and CH₂Cl₂. The polymer is insoluble in methanol, hexane and ether.

SEC of Homopolymer:

P10389C-LA (L form)



Size Exclusion Chromatography of Poly lactide (L form)

M_n = 11,000, M_w = 13,500, M_w/M_n = 1.35
Solution Viscosity in THF at 35 °C: 0.527 dL/g
dn/dc in THF at 35 °C: 0.040 mL/g
R_gw: 5.18 nm