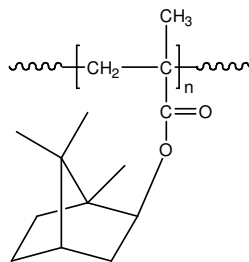


Sample Name: **Poly(isobornyl methacrylate)**

Sample #: **p3631F1-iBMA**

**Structure:**

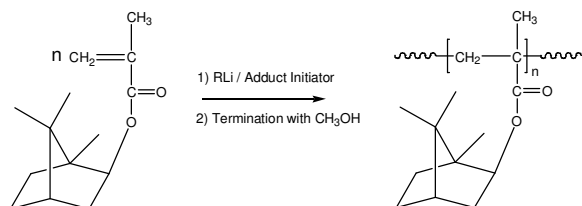


**Composition:**

$M_n \times 10^3$	PDI
175.5	1.16

**Synthesis Procedure:**

Poly(isobornyl methacrylate) is obtained by living anionic polymerization of isobornyl methacrylate. The reaction scheme used for the polymer synthesis is shown below:



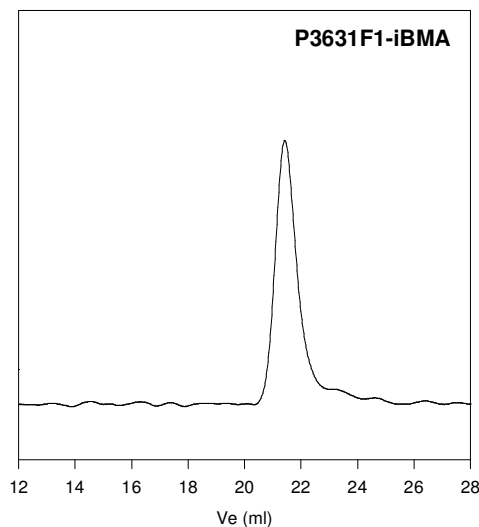
**Characterization:**

The molecular weight and polydispersity index (PDI) of Poly(isobornyl methacrylate) are obtained by size exclusion chromatography.

**Solubility:**

Poly(isobornyl methacrylate) is soluble in THF,  $CHCl_3$ , toluene and dioxane. The polymer precipitates from hexanes, methanol and ethanol.

**SEC of Homopolymer:**



Size exclusion chromatograph of Poly isobornyl metacrylate:

$M_n=175000$ ,  $M_w=204000$ ,  $PI=1.16$

Solution viscosity in THF at 30 oC 0.245dl/g

Radius of gyration 12.11 nm