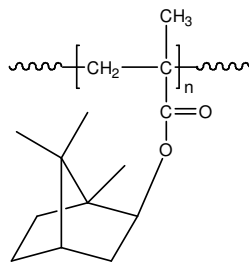


Sample Name: **Poly(isobornyl methacrylate)**

Sample #: **p3634F2-iBMA**

Structure:

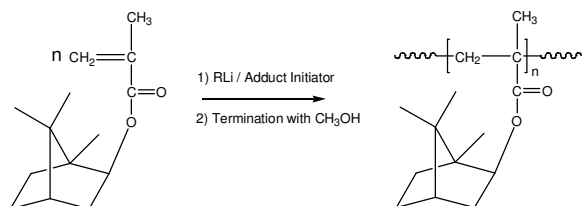


Composition:

$M_n \times 10^3$	PDI
7.0	1.30

Synthesis Procedure:

Poly(isobornyl methacrylate) is obtained by living anionic polymerization of isobornyl methacrylate. The reaction scheme used for the polymer synthesis is shown below:



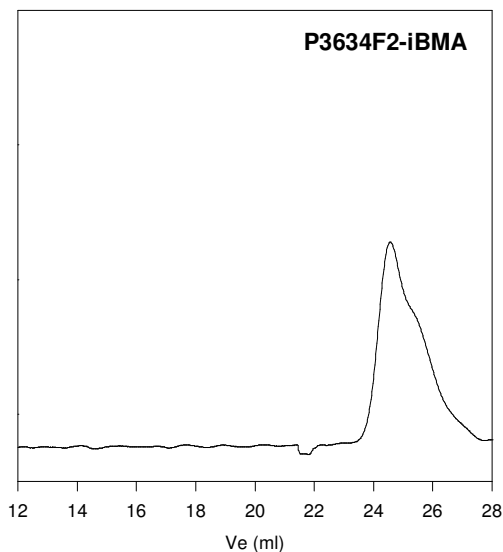
Characterization:

The molecular weight and polydispersity index (PDI) of Poly(isobornyl methacrylate) are obtained by size exclusion chromatography.

Solubility:

Poly(isobornyl methacrylate) is soluble in THF, $CHCl_3$, toluene and dioxane. The polymer precipitates from hexanes, methanol and ethanol.

SEC of Homopolymer:



Size exclusion chromatograph of Poly isobornyl metacrylate:

$$M_n=7000 \quad M_w=9000 \quad PI=1.3$$