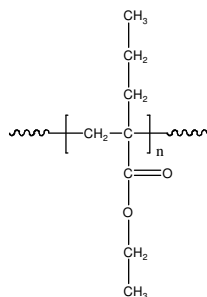


Sample Name: Poly(ethyl  $\alpha$ -propyl acrylate)

Sample #: P3768-EPrA

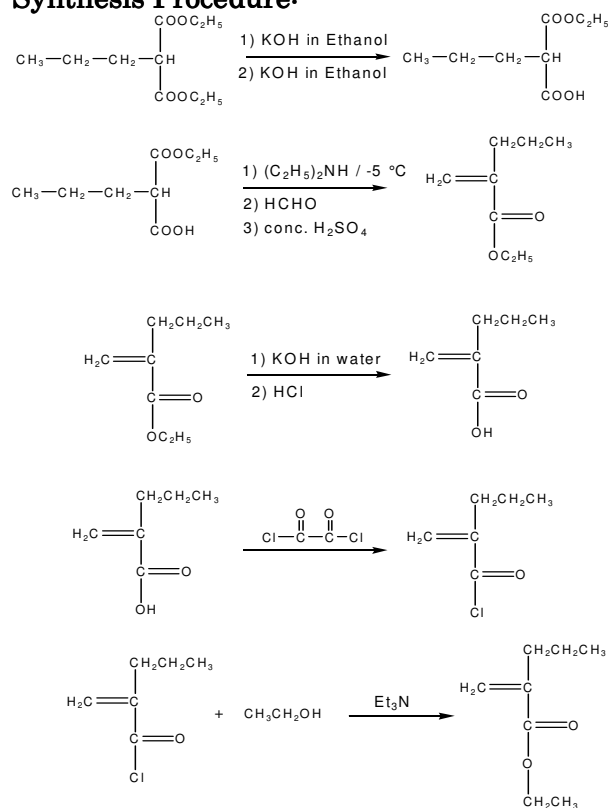
**Structure:**



**Composition:**

$\text{Mn} \times 10^3$	PDI
22.0	1.09
$T_g$ ( $^{\circ}\text{C}$ )	47

**Synthesis Procedure:**



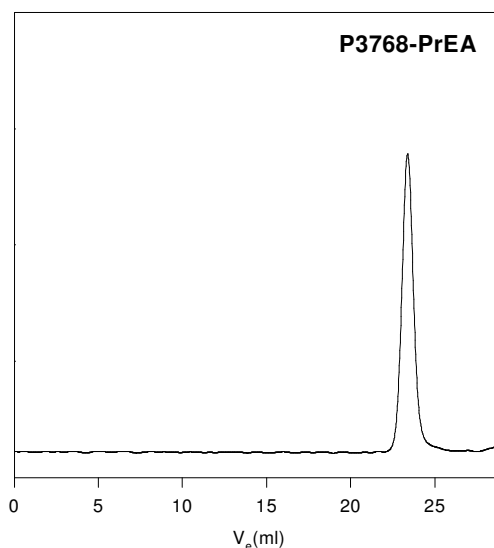
**Characterization:**

The molecular weight and polydispersity index (PDI) are obtained by size exclusion chromatography. Thermal analysis of the sample was carried out using a differential scanning calorimeter (TA Q100) at a heating rate of 10 $^{\circ}\text{C}/\text{min}$ . The inflection glass transition temperature ( $T_g$ ) has been considered.

**Solubility:**

Poly(ethyl  $\alpha$ -propyl acrylate) is soluble in THF,  $\text{CHCl}_3$  and toluene, and can be precipitated from cold ethanol and methanol.

**SEC of sample:**



Size exclusion chromatography of Poly(alpha-propyl ethyl acrylate)  
Mn = 22000; Mw = 24000; PI = 1.09

**DSC thermogram for the polymer:**

