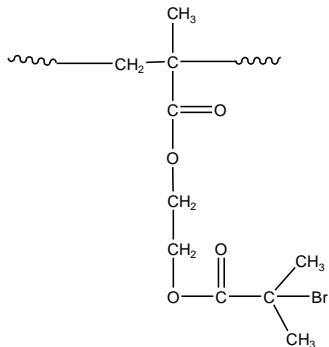


**Sample Name:**

Poly( 2-(bromoisobutryl)ethylmethacrylate)

**Sample #: P5703C-BrIEMA****Structure:****Composition:**

$M_n \times 10^3$ BrIEMA	PDI
17.0	1.25
$T_g$ for BrIEMA: 91°C	

**Synthesis Procedure:**

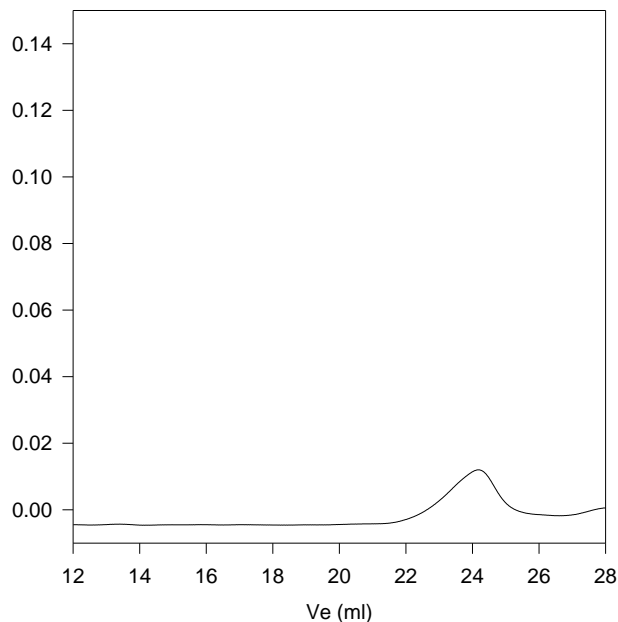
Poly(2-bromoisobutryl ethylmethacrylate) is synthesized by living anionic polymerization. Proprietary procedure is under publication.

**Characterization:**

SEC analysis of the obtained block copolymer in THF was carried out in presence of triethyl amine as eluent. Polymer PDI was determined by SEC.

**Thermal analysis:**

Thermal analysis of the samples was carried out on a TA Q100 differential scanning calorimeter at a heating rate of 10°C/min. The midpoint of the slope change of the heat flow plot of the second heating scan was considered as the glass transition temperature ( $T_g$ ).

**SEC of the Polymer:****P5703C-BrIEMA**

Size exclusion chromatography of product:  
 $M_n = 17000$ ;  $M_w = 21300$ ;  $PI = 1.25$

**DSC thermogram for BrIEMA block:**