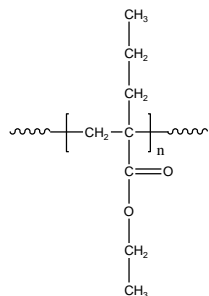


Sample Name: Poly(ethyl α -propyl acrylate)

Sample #: P5804-EPrA

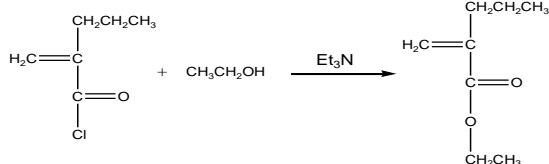
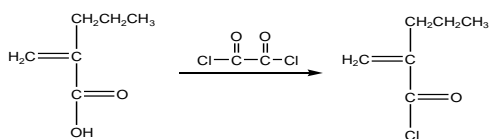
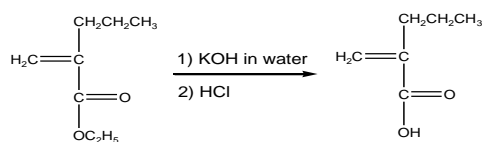
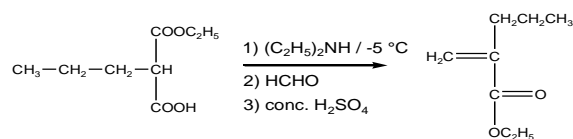
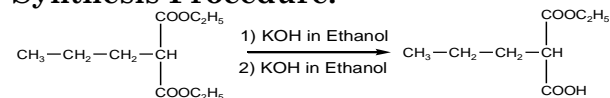
Structure:



Composition:

$M_n \times 10^3$	PDI
8.0	1.10
T_g ($^{\circ}\text{C}$)	36
s:h:i	10:13:65

Synthesis Procedure:



Characterization:

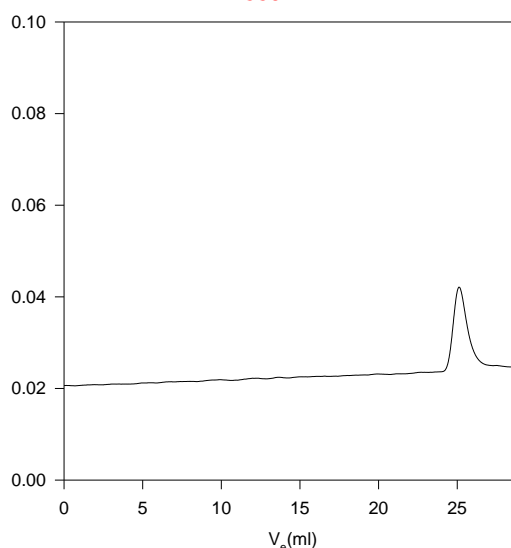
The molecular weight and polydispersity index (PDI) are obtained by size exclusion chromatography. Thermal analysis of the sample was carried out using a differential scanning calorimeter (TA Q100) at a heating rate of $10^{\circ}\text{C}/\text{min}$. The inflection glass transition temperature (T_g) has been considered.

Solubility:

Poly(ethyl α -propyl acrylate) is soluble in THF, CHCl_3 and toluene, and can be precipitated from cold ethanol and methanol.

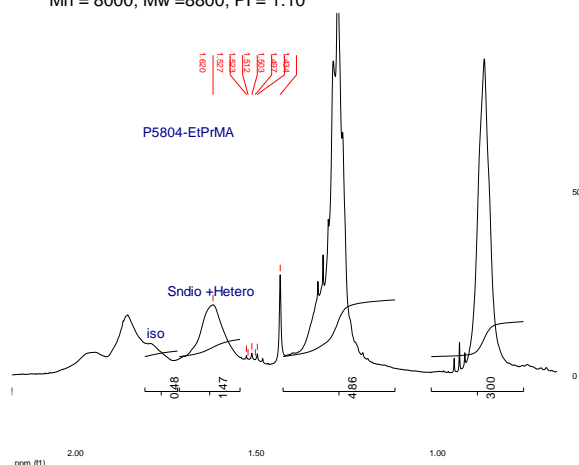
SEC of sample:

P5804-EPrA



Size exclusion chromatography of Poly(alpha-propyl ethyl acrylate)

$M_n = 8000$; $M_w = 8800$; $PI = 1.10$



DSC thermogram for the polymer:

