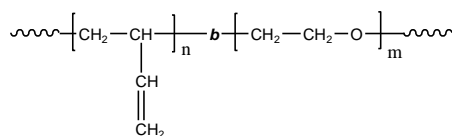


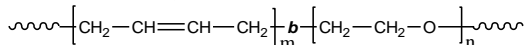
Sample Name: Poly(butadiene-b-ethylene oxide)
Poly butadiene rich in 1,2 or 1,4 microstructure

Sample #: P5837B-BdEO
(poly butadiene block rich in 1,2 microstructure)

Structure of 1,2-rich microstructure:



Structure of 1,4-rich microstructure:



Composition:

| Mn x 10 ³ Bd-b-EO | Mw/Mn (PDI) | % 1,2 addition Butadiene |
|---------------------------------|-------------|-----------------------------|
| 1.2-b-3.4 | 1.09 | 60 |

Synthesis Procedure:

Poly[butadiene(1,4 addition or 1,2 addition)-b-ethylene oxide] can be prepared by the different routes as reported in the literature (Ref: *Macromolecules* 1996, 29, 6994). The direct synthesis of diblock copolymer using lithium counter ion in the presence of **Phosphazene Base t-BuP₄** is interesting as reported in *Macromolecules*, **32** (8), 2783 -2785, 1999. These polymers can also be successfully synthesized using the different end functionalized polymers as investigated in our lab. These methodologies are proprietary.

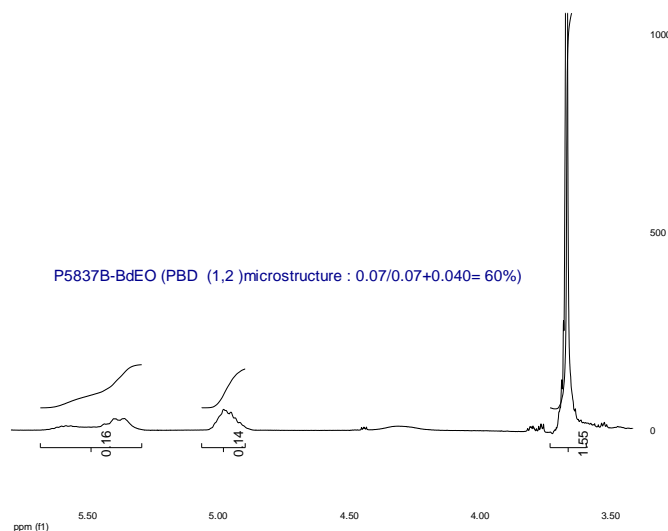
Characterization:

OH terminated polybutadiene polymer was analyzed by size exclusion chromatography (SEC) to obtain the molecular weight and polydispersity index (PDI). The final block copolymer composition was calculated from ¹H-NMR spectroscopy by comparing the peak area of vinylic butadiene protons between about 5.0-5.4 ppm with the ethylene oxide protons at 3.6 ppm. Block copolymer PDI is determined by SEC. Note: The ¹H-NMR of 1,2-polybutadiene is composed of 1 proton signal at 5.4 ppm and 2 proton signals at 5.0 ppm. Signals due to vinylic 1,4-polybutadiene are also present at 5.4 ppm.

Solubility:

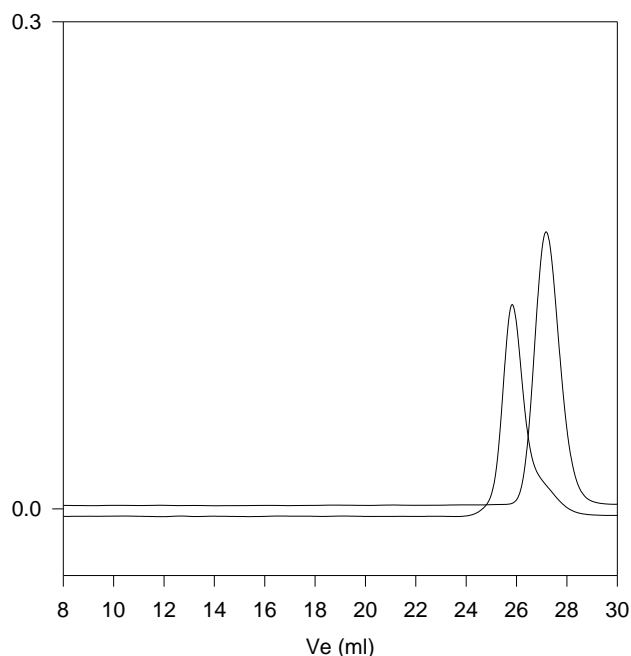
Poly(butadiene-b-ethylene oxide) is soluble in THF, CHCl₃, and toluene. The polymer has variable solubility in hexane, methanol, ethanol and water depending on its composition.

¹H NMR spectrum of the sample



SEC profile of the block copolymer

P5837B-Bd_{1,2 rich}EO



Size Exclusion Chromatogram of Poly(butadiene-b-ethylene oxide)

- Polybutadiene: M_n=1200, M_w=1300, M_w/M_n=1.08
 - PBd-b-PEO: M_n PBd(1200)-PEO(3400), M_w/M_n=1.09
- The Mn of PEO is calculated from NMR results,

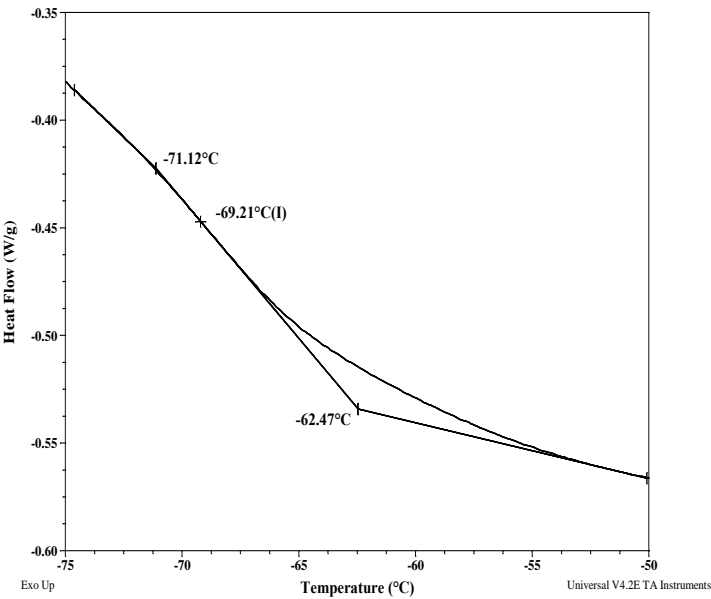
Thermal analysis of the sample P5837B-BdEO

Thermal analysis of the samples was carried out on a TA Q100 differential scanning calorimeter at a heating rate of 10°C/min. The midpoint of the slope change of the heat flow plot of the second heating scan was considered as the glass transition temperature (T_g).

Thermal analysis results at a glance

| For Bd block | | |
|----------------------|--------------|--------------|
| T_g : Not distinct | T_m : - | T_c : - |
| For PEO block | | |
| T_g : -69°C | T_m : 45°C | T_c : 23°C |

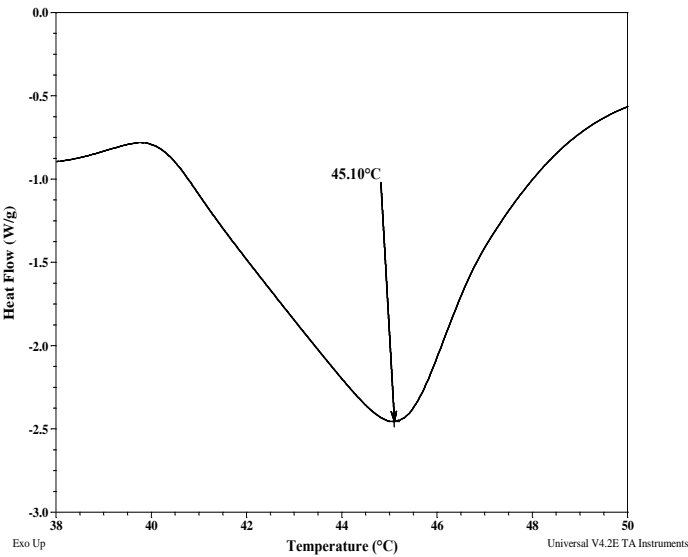
Thermogram for PEO block:



Melting and crystallization curve for the sample

The melting temperature (T_m) was taken as the maximum of the endothermic peak where as the crystallization temperature (T_c) was considered as the minimum of the exothermic peak.

Melting curve for PEO block:



Crystallization curve For PEO block

