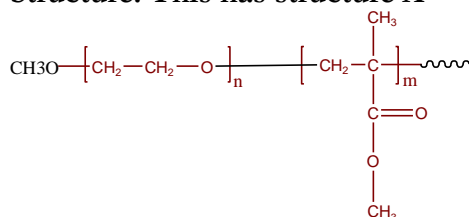


Sample Name:
Poly(methyl methacrylate -b- ethylene oxide)

Sample #: P6346-EOMMA

Structure: This has structure A

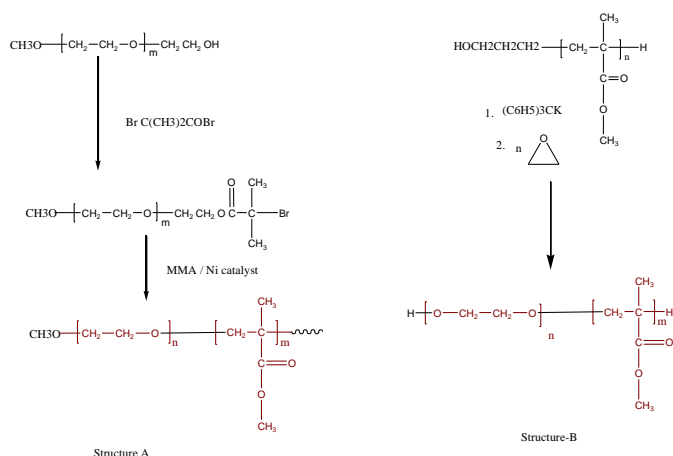


Composition:

Mn x 10 ³ PEO-b-MMA	PDI
11.0-8.0	1.08

Synthesis Procedure:

Poly(methyl methacrylate -b- ethylene oxide) is prepared by different routes. The scheme of the reactions are illustrated below:



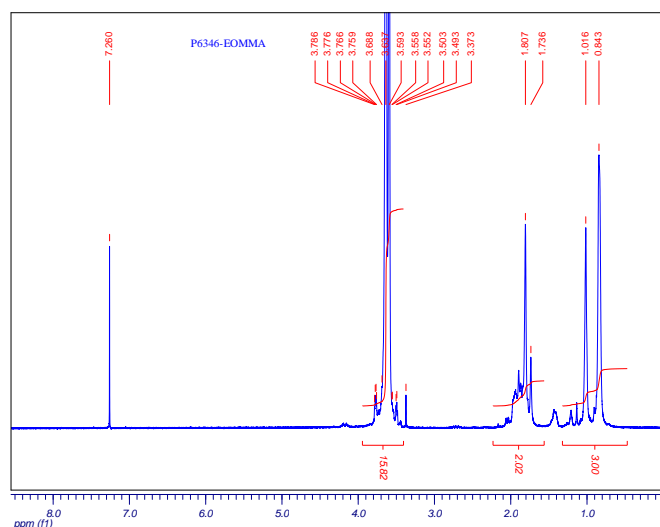
Purification of the polymer:

The obtained polymer the un reacted PEG can be removed by stirring the polymer in hot water. The obtained polymer dissolved in CHCl_3 /Toluene and pass through the column packed with silica. The Diblock copolymer obtained by second route where the macroinitiator of PEG bearing Br terminal group was used to initiate polymerization of MMA. The obtained polymer solution in toluene/ CHCl_3 was passed through a column packed with silica to remove the traces amount of Nickel catalyst. The polymers was further purified by stirring in hot water to remove unreacted PEG macroinitiator. The polymer was recovered by precipitation in cold ether/hexane mixture.

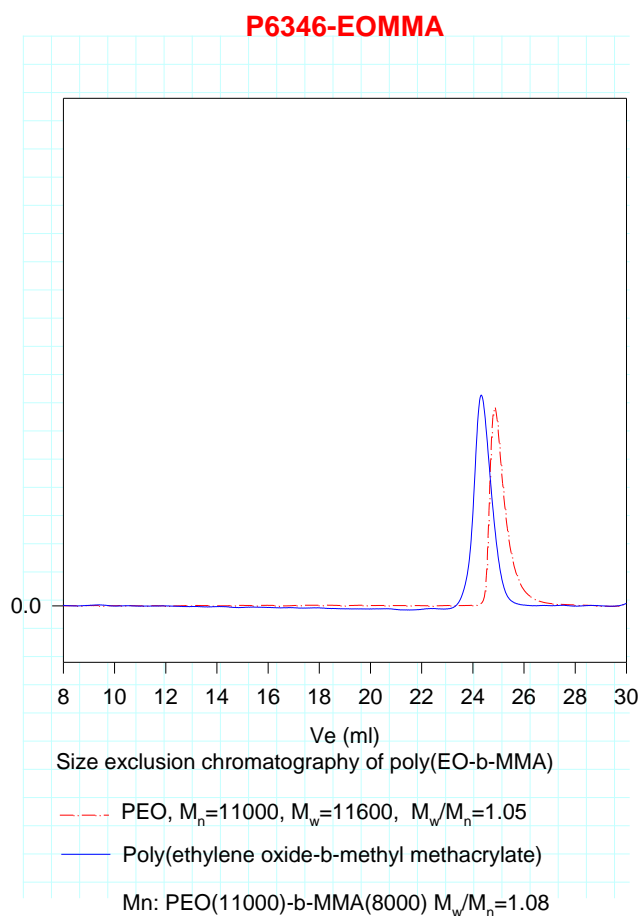
Solubility:

Poly(ethylene oxide -b- MMA) is soluble in CHCl_3 , THF, toluene. The polymer precipitated out from hexane.

¹H-NMR Spectrum of the block copolymer:



SEC of the block copolymer:



Thermal analysis of the sample# P6346-EOMMA

Thermal analysis of the samples was carried out on a TA Q100 differential scanning calorimeter at a heating rate of 20°C/min. The midpoint of the slope change of the heat flow plot of the second heating scan was considered as the glass transition temperature (T_g).

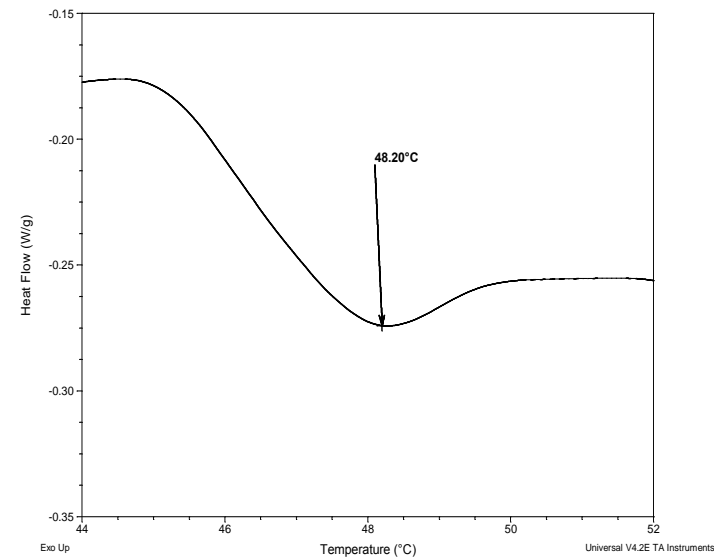
Thermal analysis results at a glance

For PMMA block		
T_g : 88°C	T_m : -	T_c : -
For PEO block		
T_g : -61°C	T_m : 48°C	T_c : Not found

Melting and crystallization curve for the sample

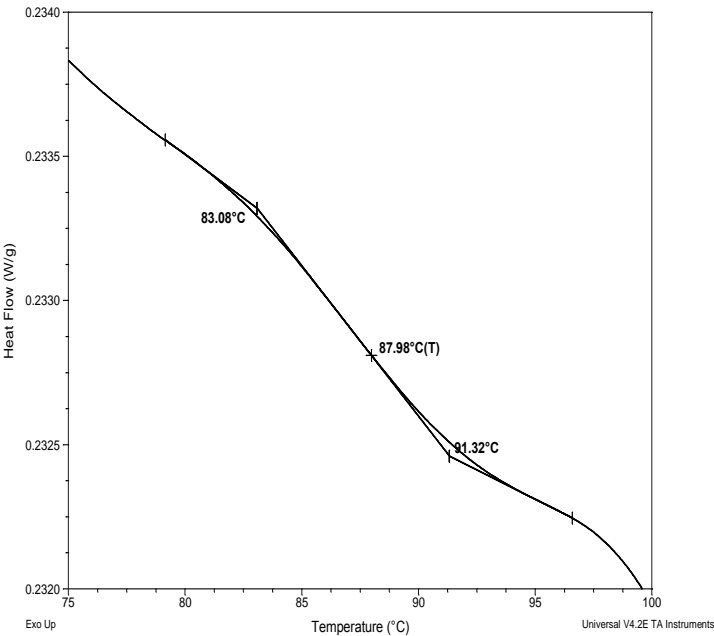
The melting temperature (T_m) was taken as the maximum of the endothermic peak where as the crystallization temperature (T_c) was considered as the minimum of the exothermic peak.

Melting curve for PEO block



Crystallization curve for PEO block

Thermogram for the MMA block



Thermogram for PEO block

