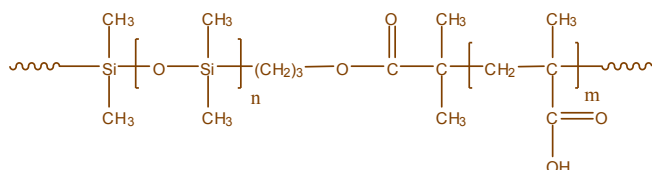


Sample Name: Poly(dimethyl siloxane -b- methacrylic acid)

Sample #: P6444-DMSMAA

Structure:

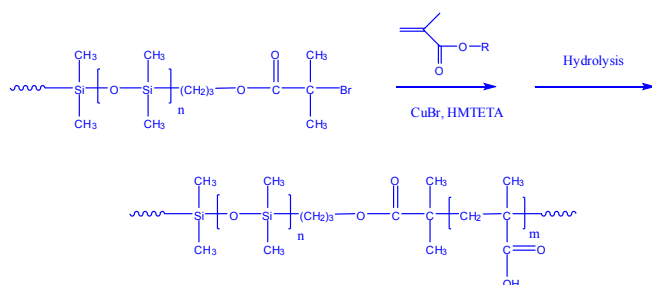


Composition:

| | |
|----------------------------------|------|
| $M_n \times 10^3$ PDMS-b-PMAA | PDI |
| 8.0-b-7.0 | 1.48 |

Synthesis Procedure:

Poly(dimethyl siloxane -b- methacrylic acid) is prepared by living anionic polymerization of hexamethyl cyclotrisiloxane followed by controlled radical polymerization of protected methacrylic acid monomer. The reaction scheme is shown below:



Characterization:

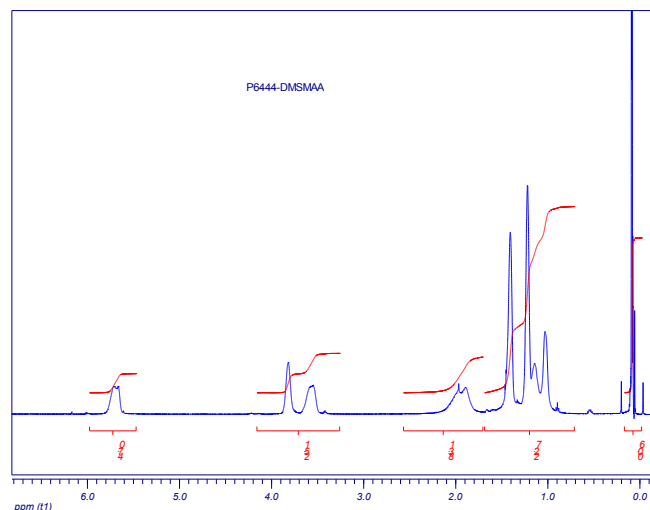
An aliquot of the Poly(dimethyl siloxane) block was terminated before controlled radical polymerization of the methacrylate block and analyzed by size exclusion chromatography (SEC) to obtain the molecular weight and polydispersity index (PDI). The final block copolymer composition was calculated from $^1\text{H-NMR}$ spectroscopy by comparing the peak area of the siloxane protons at about 0 ppm with the peak area of the methacrylic acid protons at about 1-2.5 ppm. The composition is also calculated according to FTIR showed as followed graph. The results from NMR and FTIR are compatible.

Note: The protected polymethacrylic acid may cause the SEC profile broadening. We still claim the M_w/M_n as the apparent molecular weight. Real M_w/M_n should be narrower

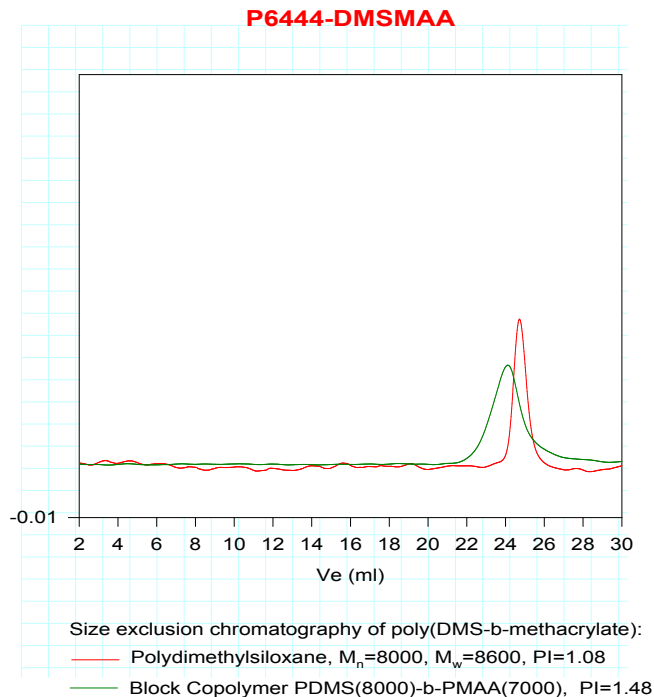
Solubility:

Poly(dimethyl siloxane -b- methacrylic acid) is soluble in THF, chloroform and dichloromethane. It is not reprecipitated well in methanol or hexanes because of its amphiphilic characters.

$^1\text{H-NMR}$ Spectrum of the block copolymer:



SEC profile of the block copolymer:



Thermal analysis of the sample# P6444-DMSMAA

Thermal analysis of the samples was carried out on a TA Q100 differential scanning calorimeter at a heating rate of 10°C/min. The midpoint of the slope change of the heat flow plot of the second heating scan was considered as the glass transition temperature (T_g).

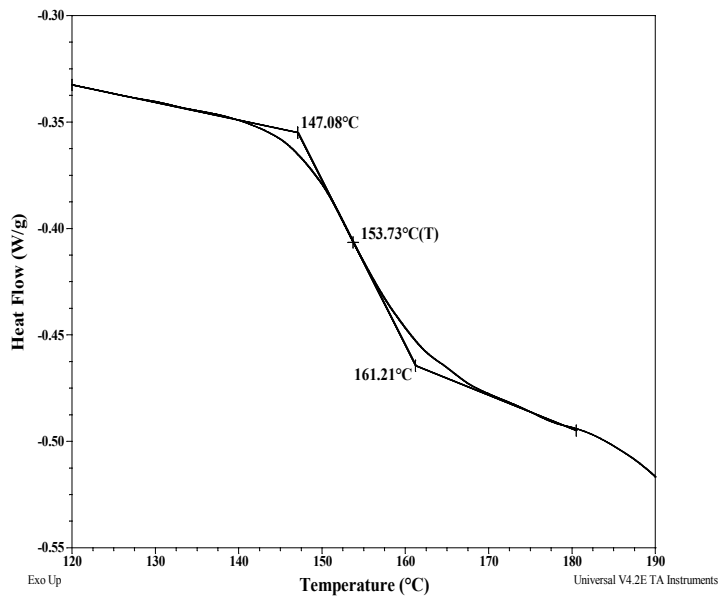
Melting and crystallization curve for the sample

The melting temperature (T_m) was taken as the maximum of the endothermic peak where as the crystallization temperature (T_c) was considered as the minimum of the exothermic peak.

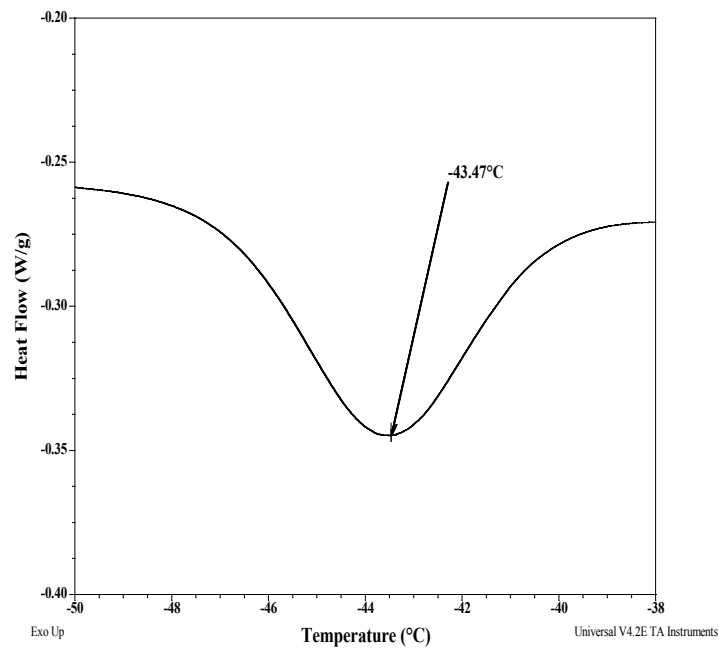
Thermal analysis results at a glance

| Sample | T_m (°C) | T_c (°C) | T_g (°C) |
|--------|------------|------------|------------|
| DMS | -44 | -70 | -127 (Lit) |
| MAA | - | - | 154 |

Thermogram for MAA block:



Melting curve for DMS block:



Crystallization curve for DMS block:

