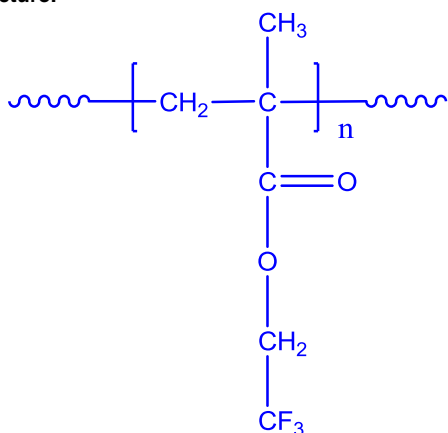


Sample Name:
Poly(2,2,2-Trifluoroethyl methacrylate)

Sample #: **P6631-MATRIF**

Structure:

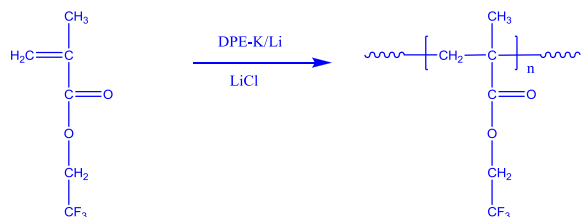


Composition:

Mn x 10 ³	PDI
9.0	1.28

Synthesis Procedure:

Poly(**2,2,2-Trifluoroethyl methacrylate**) is synthesized by living polymerization (anionic in this case).



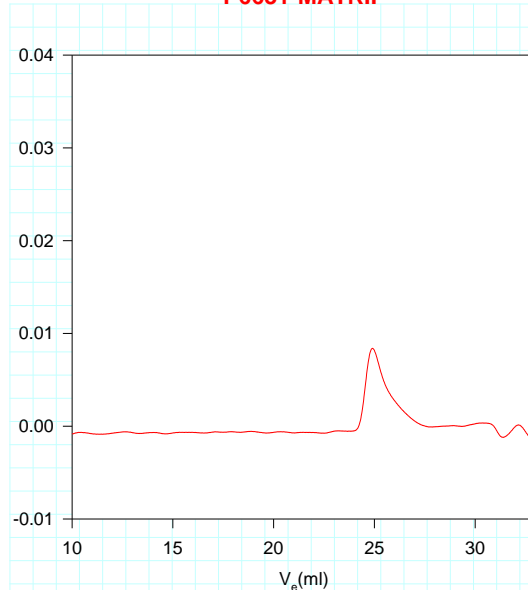
Characterization:

The molecular weight and polydispersity index (PDI) of Poly(**2,2,2-Trifluoroethyl methacrylate**) are obtained by size exclusion chromatography.

Solubility: Poly(**2,2,2-Trifluoroethyl methacrylate**) is soluble in THF, chloroform etc. But it is insoluble in hexane, methanol, and water.

SEC of Homopolymer:

P6631-MATRIF



Size exclusion chromatography of Poly(trifluoroethyl methacrylate)

Mn = 9,000; Mw 11,600; PI = 1.28