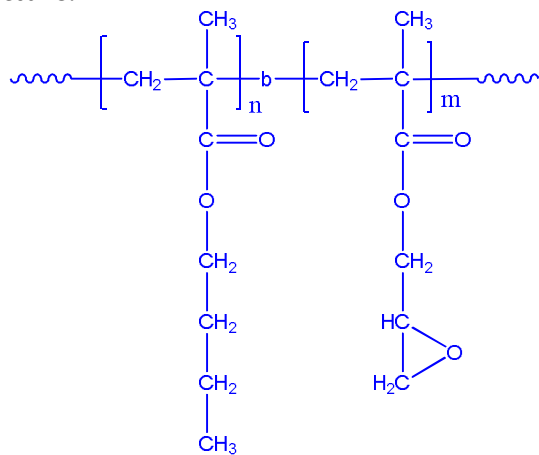


**Sample Name:**

Poly( n-butyl methacrylate-b-glycidyl methacrylate)

**Sample #:** P6809-nBuMAGMA

**Structure:****Composition:**

$M_n \times 10^3$ nBuMA-b-GMA	PDI
9.5-b-5.3	1.49

**Synthesis Procedure:**

Poly(n-butyl methacrylate -b- glycidyl methacrylate) block copolymer is synthesized by GTP polymerization with sequential addition of n-butyl methacrylate and -glycidyl methacrylate. The obtained polymer was precipitated in methanol.

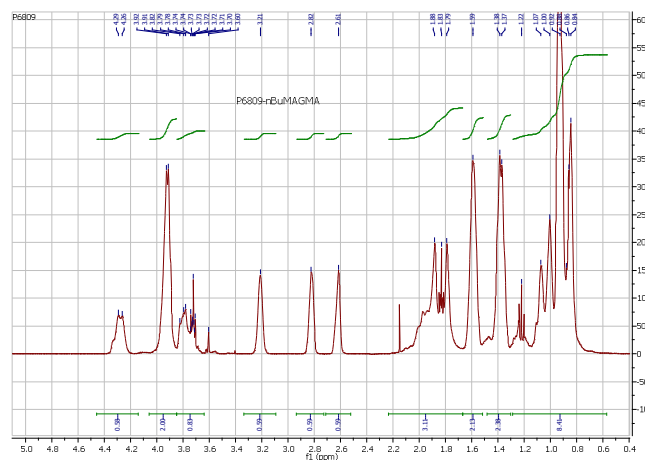
**Characterization:**

SEC analysis of the obtained block copolymer in THF in presence of triethyl amine as eluent .

The final block copolymer composition by  $^1\text{H-NMR}$  spectroscopy in  $\text{CdCl}_2$  Block copolymer PDI is determined by SEC.

**Solubility:**

Polymer is soluble in THF and  $\text{CHCl}_3$ .

 **$^1\text{H-NMR}$  Spectrum of the block copolymer:****SEC of the block copolymer:**