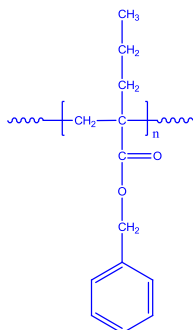


Sample Name: Poly(benzyl  $\alpha$ -propyl acrylate)

Sample #: P6822- BzPrA

**Structure:**



**Composition:**

$M_n \times 10^3$	PDI
9.0	1.19
$T_g$ (°C)	66

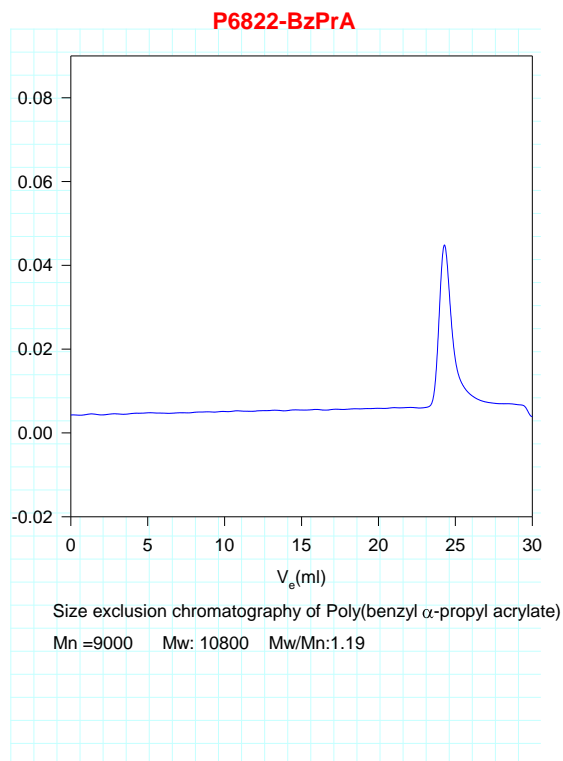
**Characterization:**

The molecular weight and polydispersity index (PDI) are obtained by size exclusion chromatography. Thermal analysis of the sample was carried out using a differential scanning calorimeter (TA Q100) at a heating rate of 10°C/min. The inflection glass transition temperature ( $T_g$ ) has been considered.

**Solubility:**

Poly(benzyl  $\alpha$ -propyl acrylate) is soluble in THF, CHCl<sub>3</sub> and toluene, and can be precipitated from cold ethanol and methanol.

**SEC of sample:**



**DSC Thermogram for the polymer**

