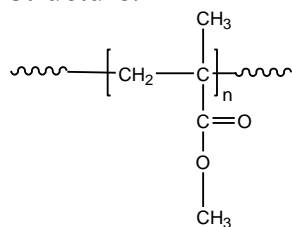


Sample Name: Poly(methyl methacrylate)

Different Microstructure

Sample #: P8265B-MMA

Structure:



Composition:

Mn x 10 ³	PDI
15.0	1.15
Syndio :Hetero:Iso	58:37:5

Synthesis Procedure:

Atactic poly(methyl methacrylate) is obtained by control radical polymerization or GTP process.

Characterization:

The molecular weight and polydispersity index (PDI) are obtained by size exclusion chromatography (SEC) in THF. SEC analysis was performed on a Varian liquid chromatograph equipped with refractive and UV light scattering detectors. Three SEC columns from Supelco (G6000-4000-2000 HXL) were used with triple detectors from Viscoek Co.

Thermal analysis of the samples was carried out using a differential scanning calorimeter (TA Q100) at a heating rate of 10°C/min. The inflection glass transition temperature (T_g) of the sample has been considered.

Solubility:

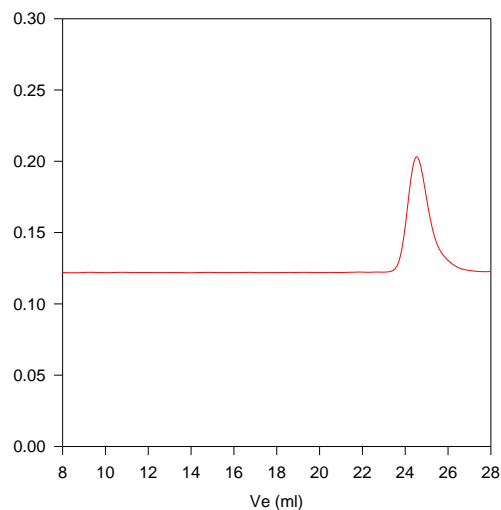
Poly(tert butylmethacrylate) is soluble in THF, CHCl₃, toluene and dioxane. The polymer precipitates from cold methanol and ethanol.

T_g vs MW for selected atactic poly methyl methacrylate

M _n × 10 ³	T _g (°C)	M _n × 10 ³	T _g (°C)
1.1	51	36	98
2.5	76	55	111
5.0	91	70	107
15	101	127	115
19	107	230	114
29	96	700	121

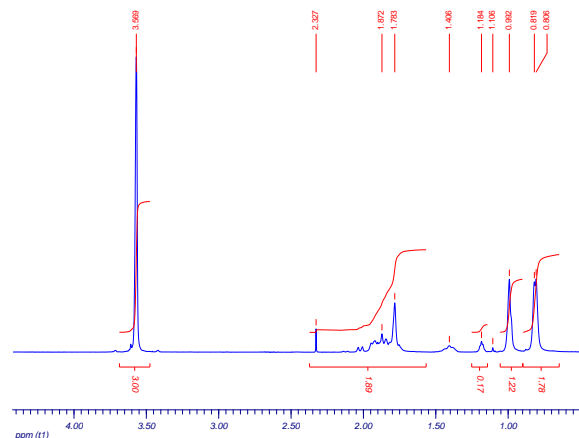
SEC of the Homopolymer:

P8265B-MMA



Size exclusion chromatograph of polymethylmethacrylate-rich in atactic:
M_n=15,000, M_w=17500, PI=1.15
Solution Viscosity in THF at 35 °C: 0.140dl/g
Radius of Gyration in THF at 35 °C: 4.08nm
dn/dc in THF at 35°C: 0.084ml/g

NMR of the Homopolymer:



T_g of atactic poly methyl methacrylate as function of molecular weight

