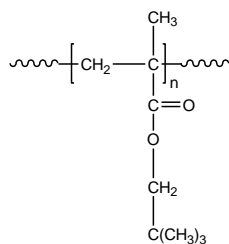


Sample Name: **Poly(neopentyl methacrylate)**

Sample #: **P8517-NPMA**

Structure:

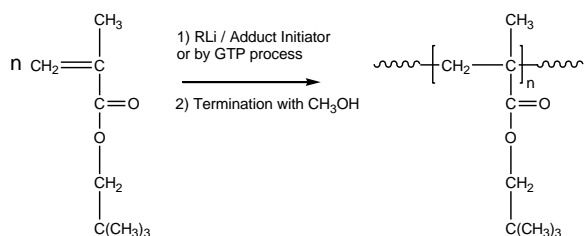


Composition:

$M_n \times 10^3$	PDI
35.0	1.13

Synthesis Procedure:

Poly(neopentyl methacrylate) is obtained by living anionic or GTP polymerization of neopentyl methacrylate. The reaction scheme used for the polymer synthesis is shown below:



Characterization:

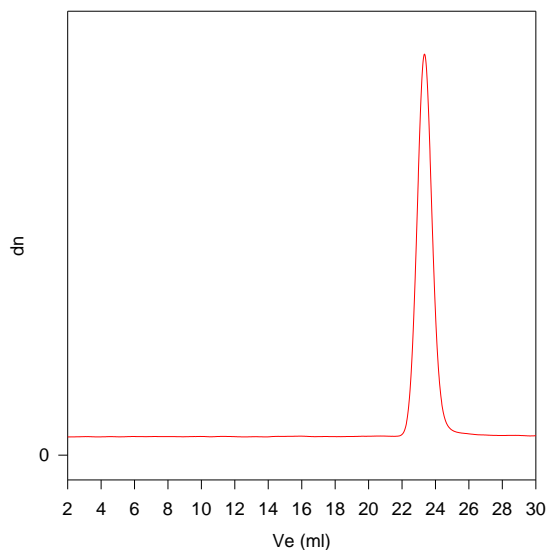
The molecular weight and polydispersity index (PDI) of Poly(neopentyl methacrylate) are obtained by size exclusion chromatography.

Solubility:

Poly(neopentyl methacrylate) is soluble in THF, CHCl_3 , toluene and dioxane. The polymer precipitates from hexanes, methanol and ethanol.

SEC of Homopolymer:

P8517-NPMA



Size Exclusion Chromatography of Poly(neopentyl methacrylate)

$M_n=35000$, $M_w=39,500$ $PI=1.13$