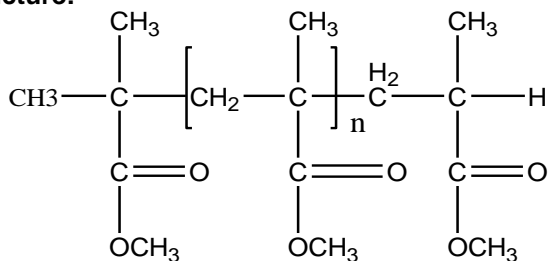


Sample Name: **Poly (methyl methacrylate)**

Different microstructure

Sample #: **P8529-MMA**

Structure:



Composition:

Mn x 10 ³	PDI
1.1	1.20
Syndio : Hetero : Isotactic	55 : 42 : 3

Synthesis Procedure:

Poly(methyl methacrylate) is obtained by controlled radical polymerization or GTP process.

Characterization:

Tacticity of the polymer was determined by ¹H NMR. The molecular weight and polydispersity index (PDI) were obtained by size exclusion chromatography (SEC) in THF. SEC analysis was performed on a Varian liquid chromatograph equipped with refractive and UV light scattering detectors. Three SEC columns from Supelco (G6000-4000-2000 HXL) were used with triple detectors from Viscotek Co.

Thermal analysis of the samples was carried out using a differential scanning calorimeter (TA Q100) at a heating rate of 10°C/min. The inflection glass transition temperature (T_g) of the sample has been considered.

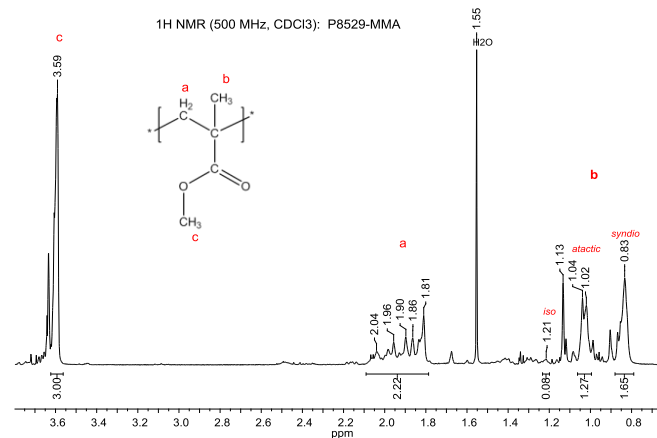
Solubility:

The polymer is soluble in THF, CHCl₃, toluene and dioxane. The polymer precipitates from cold methanol and ethanol.

T_g vs MW for selected atactic PMMA:

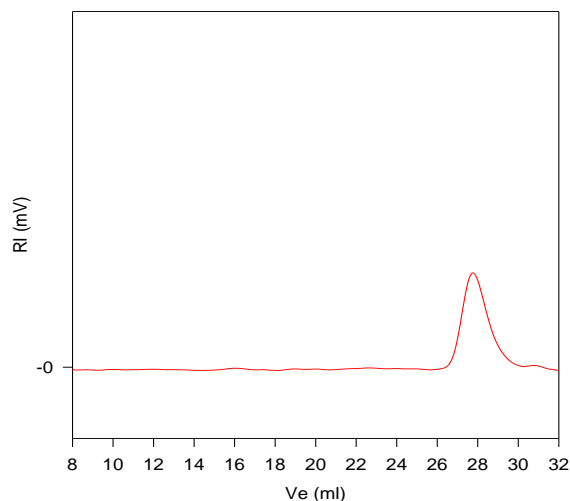
M _n × 10 ³	T _g (°C)	M _n × 10 ³	T _g (°C)
1.1	51	36	98
2.5	76	55	111
5.0	91	70	107
15	101	127	115
19	107	230	114
29	96	700	121

¹H NMR spectrum of PMMA:



SEC elugram of PMMA homopolymer:

P8529-MMA



Size Exclusion Chromatography of the polymer:

— M_n = 1,100, M_w = 1,300, M_w/M_n = 1.20

DSC:

T_g of atactic poly methyl methacrylate as function of molecular weight

