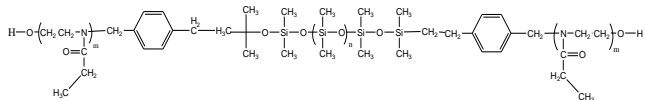


Sample Name:

Poly(2-ethylloxazoline-b-dimethylsiloxane-b-2-ethylloxazoline) Triblock Copolymer

Sample #: P8609-EtOXZDMSEtOXZ

Structure:



Composition:

$M_n \times 10^3$	PDI
7.0-b-4.0-7.0	1.25
Dp of each units: (70-b-54-b-70)	

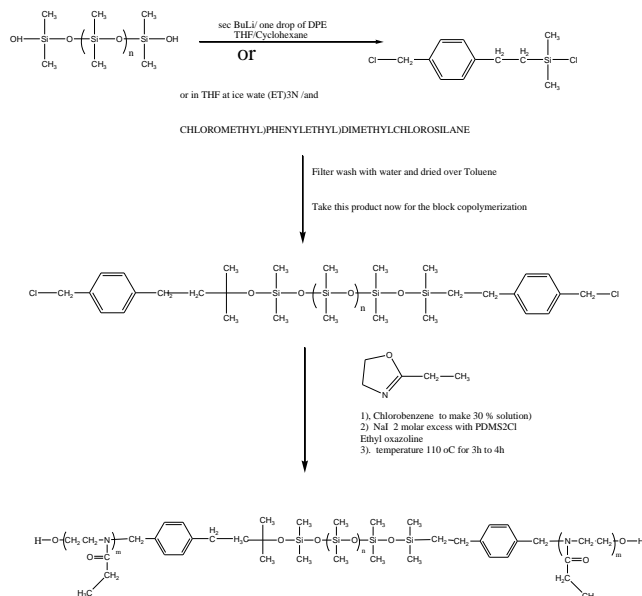
Synthesis Procedure:

The α - ω dihydroxy terminated Poly(2-ethylloxazoline-b-dimethylsiloxane-b-2-ethylloxazoline) triblock copolymer was prepared by combination of anionic living polymerization of hexamethylcyclotrisiloxane (D3) and cationic polymerization of 2-ethyl oxazoline, using difunctional initiator. Polymer was treated with equivalent amount of end functional moieties with NaOH/Methanol. Polymer was recovered in cold acetone, wash couple of times with cold acetone to remove the unreacted any trace amount of monomer.

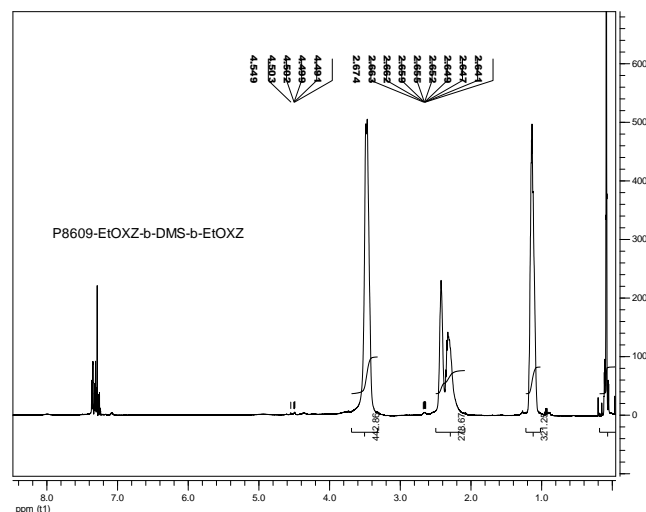
Characterization:

Central Block: The molecular weight and polydispersity index of the poly(ethylene oxide) block was determined by size exclusion chromatography (SEC) using a Varian liquid chromatograph equipped with a UV and refractive index detector. The chemical composition was extracted from proton NMR, which was recorded from Varian 500MHz instrument using $CDCl_3$ as solvent.

The reaction of polymerization can be illustrated as follows:



1H NMR of the Triblock copolymer:



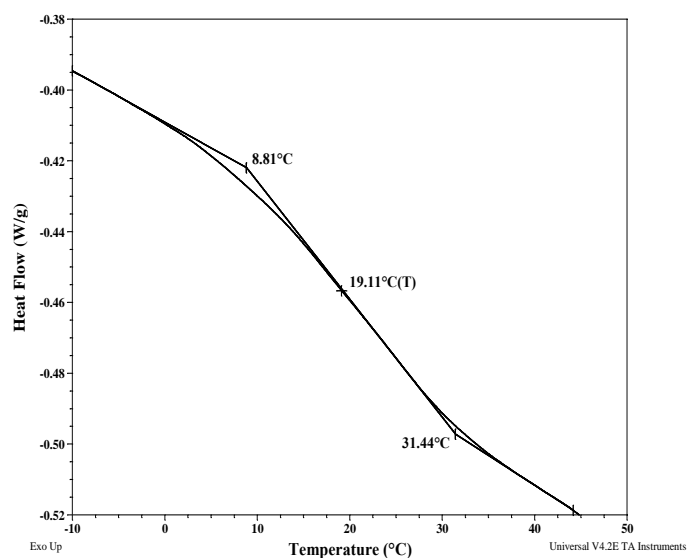
Thermal analysis of the sample# P8609-EtOXZDMSEtOXZ

Thermal analysis of the samples was carried out on a TA Q100 differential scanning calorimeter at a heating rate of 10°C/min. The midpoint of the slope change of the heat flow plot of the second heating scan was considered as the glass transition temperature (T_g).

Thermal analysis results at a glance

For PDMS block		
T_g : -127°C (lit. value)	T_m : 54°C	T_c : 21
For EtOXZ block		
T_g : 19	T_m : -	T_c : -

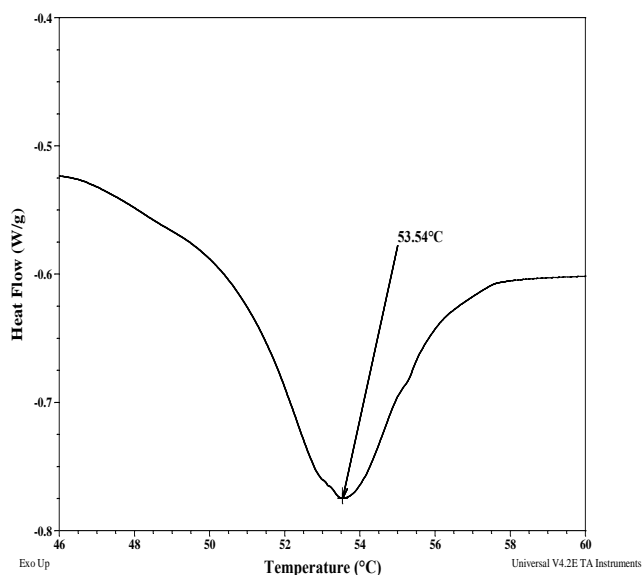
Thermogram for EtOXZ block:



Melting and crystallization curve for the sample

The melting temperature (T_m) was taken as the maximum of the endothermic peak where as the crystallization temperature (T_c) was considered as the minimum of the exothermic peak.

Melting curve for PEO block:



Crystallization curve For PDMS block:

