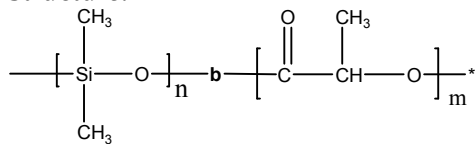


Sample Name: Poly(dimethyl siloxane-b-lactide)
D or L or DL form

Sample #: P9032-DMSLA (DL form)

Structure:

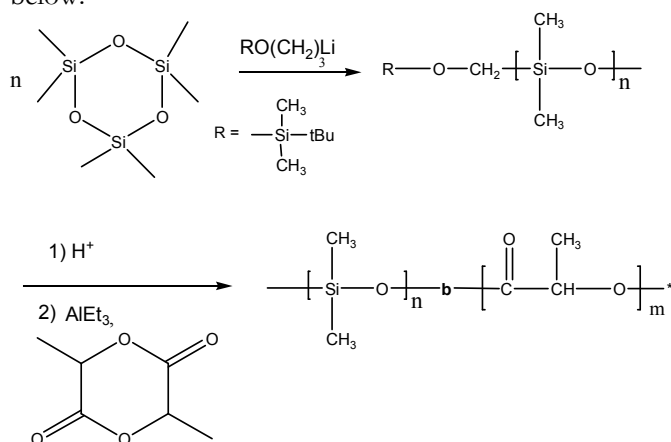


Composition:

Mn x 10 ³ DMS-b-LA	Mw/Mn (PDI)
10.0-b-3.5	1.13

Synthesis Procedure:

Poly(dimethyl siloxane-b-lactide) is prepared by living anionic polymerization of hexamethyl cyclotrisiloxane followed by coordination polymerization of lactide monomer. The reaction scheme is shown below:



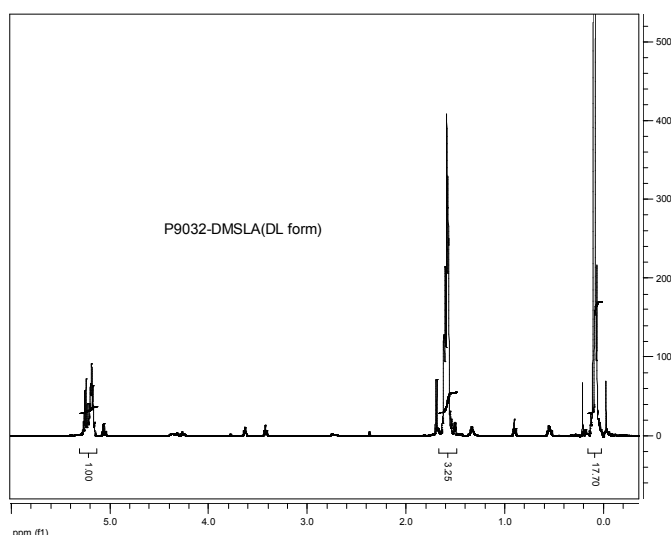
Characterization:

An aliquot of the anionic poly(dimethyl siloxane) block was terminated before addition of lactide monomer and analyzed by size exclusion chromatography (SEC) to obtain the molecular weight and polydispersity index (PDI). The final block copolymer composition was calculated from ¹H-NMR spectroscopy by comparing the peak area of the dimethyl siloxane protons near 0 ppm with the lactide 5.1 protons at about 1.6 ppm. Block copolymer PDI is determined by SEC.

Solubility:

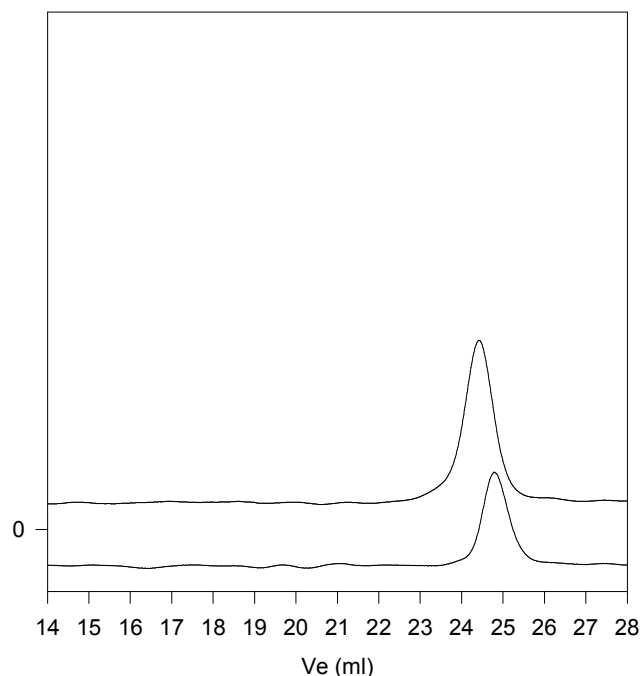
Poly(dimethylsiloxane-b-lactide) is soluble in toluene, CHCl₃.

¹H NMR spectrum of the sample:



SEC profile of the block copolymer

P9032-DMSLA (DL form)



— SEC profile of Poly(dimethyl siloxane-b-Lactide):

— Poly diethyl siloxane M_n=10000, M_w=10500, PI=1.05

— Block Copolymer PBd(10000)-b-PLA(3500), PI=1.13