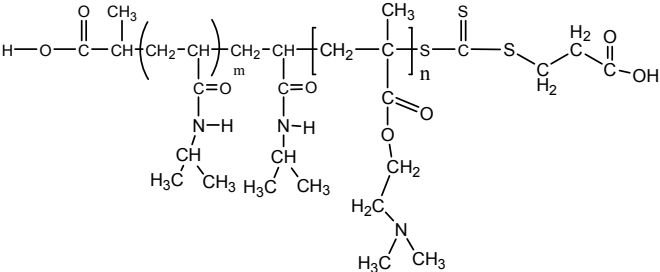


Sample Name:

Poly (N-isopropylacrylamide -b- NN-dimethylaminoethylmethacrylate)

Sample #: P16035C-NIPAMDMAEMA

Structure:



Composition:

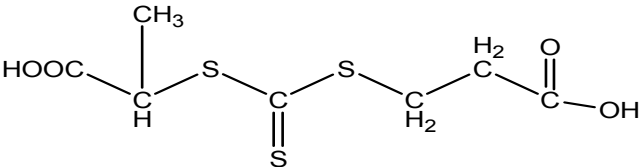
Mn x 10 <sup>3</sup> PNIPAM-b-NNDMAEMA	PDI
5.0-b-8.0	1.3

**Synthesis Procedure:** The polymer was synthesized by RAFT process

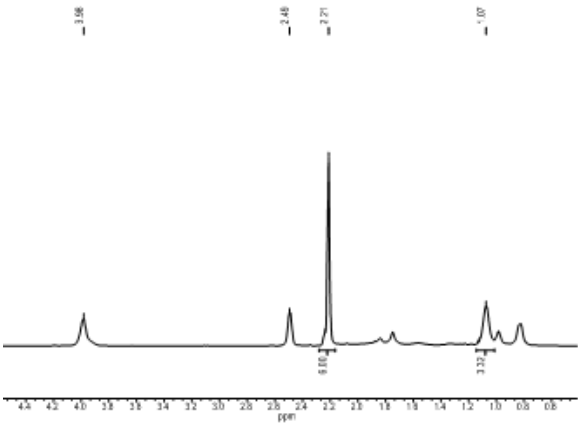
**Characterization:** The polymer was characterized by <sup>1</sup>H NMR and size exclusion chromatography (SEC).

**Solubility:** The polymer is soluble in THF, DMF, and Acetone.

**RAFT reagent used:**

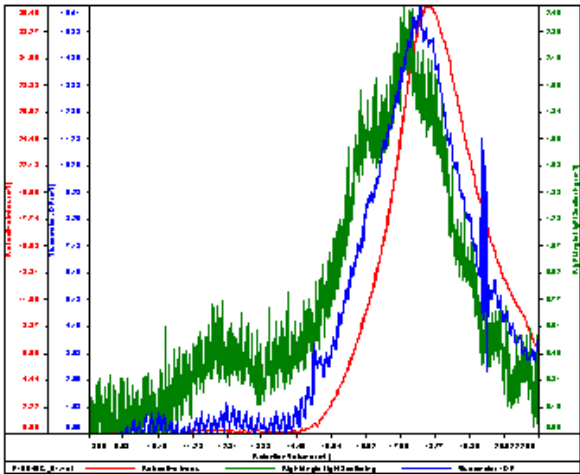


**<sup>1</sup>H NMR spectrum of the RAFT reagent:**



NIPAMDMAEMA

Conc (mg/mL)	5.567
d.n.Mn (mL/g)	0.000
Metho d	PSSD-M 25-25 2016 0000 um
Bolvent	D MF w/0.02% N U Br
Column	PSS



Sample	Mn	Mw	Mp	Mw/Mn	IV
0.005	17,354	12,543	1.388	0.104	