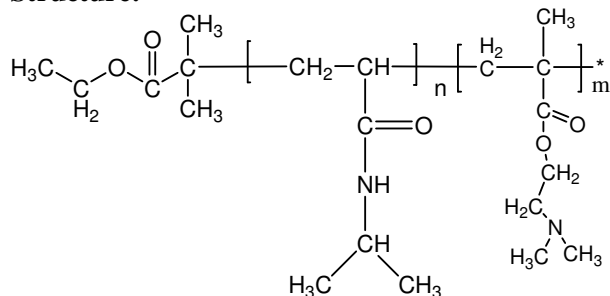


Sample Name:

Poly(N-isopropylacrylamide -b- NN-dimethylaminoethylmethacrylate)

Sample #: **P16041B-NIPAMDMAEMA**

Structure:



Composition:

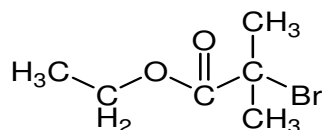
Mn x 10 ³ PNIPAM-b-NNDMAEMA	PDI
22.0-b-74.0	1.9

Synthesis: The polymer was synthesized by RAFT process

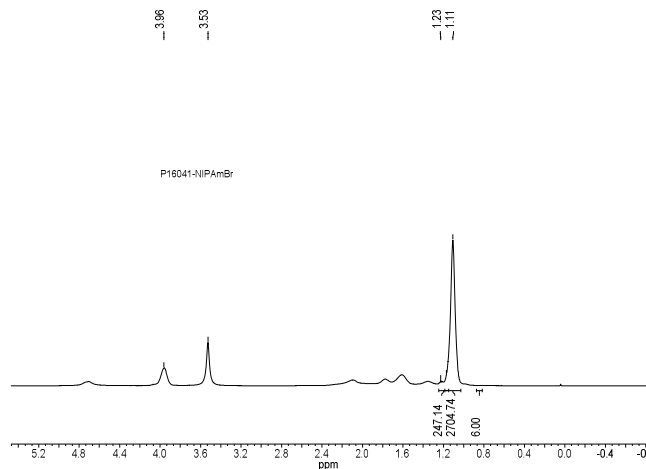
Characterization: The polymer was characterized by SEC and ¹H NMR.

Solubility: The polymer is soluble in THF, DMF, Acetone.

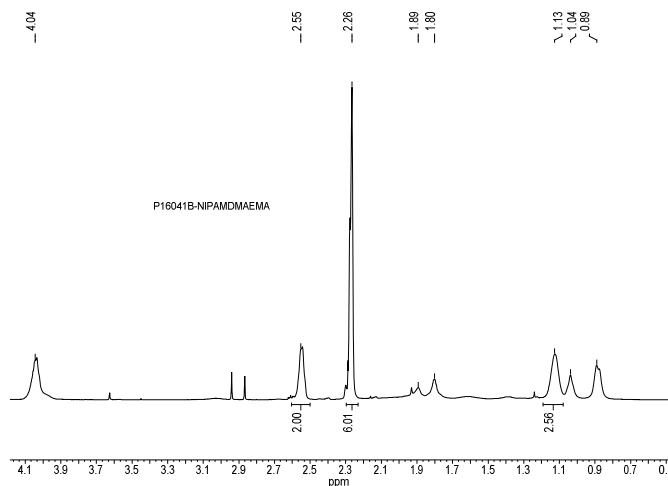
ATRP reagent used:



¹H NMR spectrum of the PNIPAM-Macroinitiator in CDCl₃:



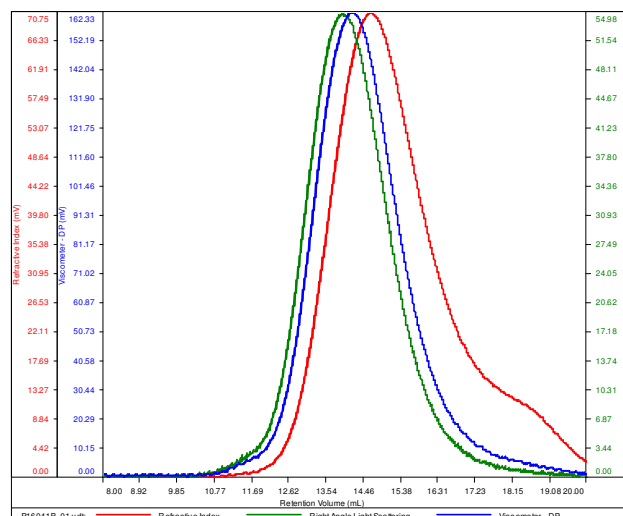
¹H NMR Spectrum of the block copolymer:



SEC elugram of the block copolymer:

P16041B-NIPAMDMAEMA

Conc (mg/mL)	9.5959
dn/dc (mL/g)	0.0800
Method	PS80k-May-25-2016-0000.vcm
Solvent	DMF w 0.023M LiBr
Column	PSS



Sample	Mn	Mw	Mp	Mw/Mn	IV
P16041B_01.vdt	95,334	187,878	169,010	1.971	0.4704